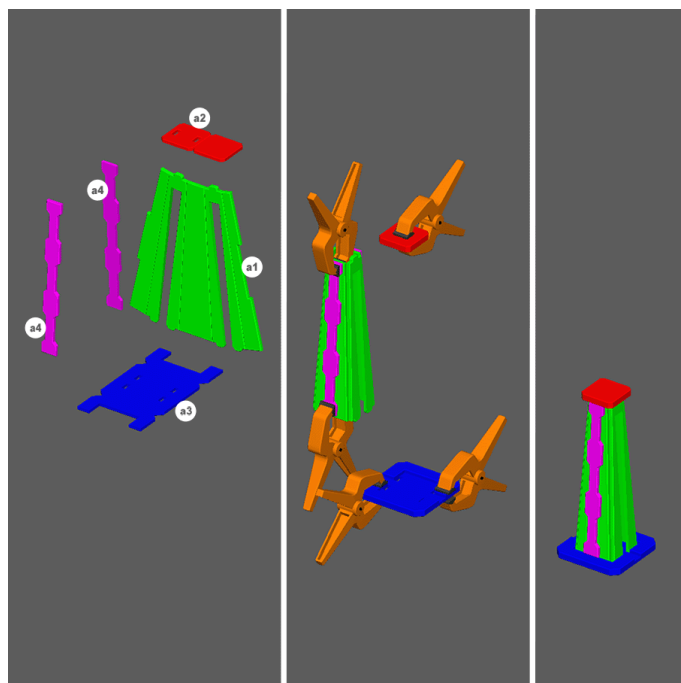




PERIMETER WALL BUILD INSTRUCTIONS



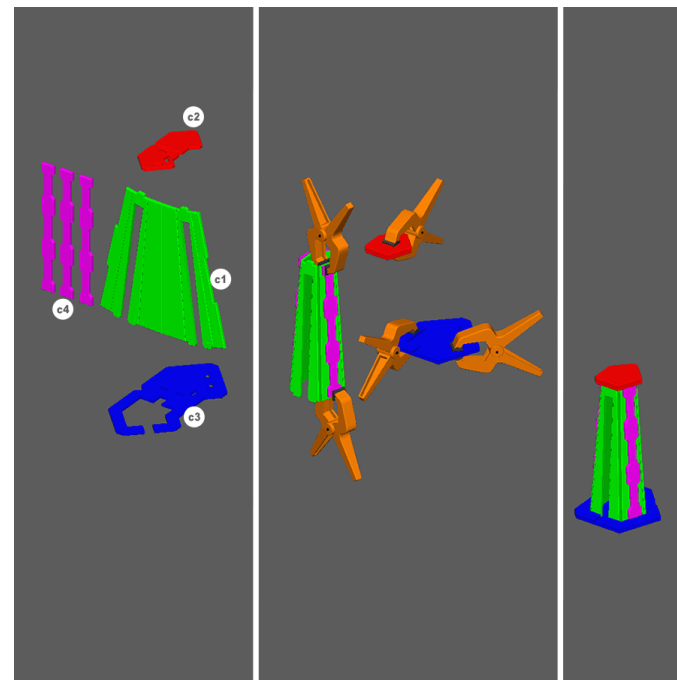
STEP 1 – STRAIGHT STANCHION

Fold, glue, and clamp pieces A2 and A3 as shown.

Fold piece A1 as shown. Glue pieces A4 to front and back of piece A1 as shown

Make sure that piece a4 is aligned to the top edge of piece a1.

Glue pieces together as shown. Repeat two more times.



STEP 2 – 60° STANCHION

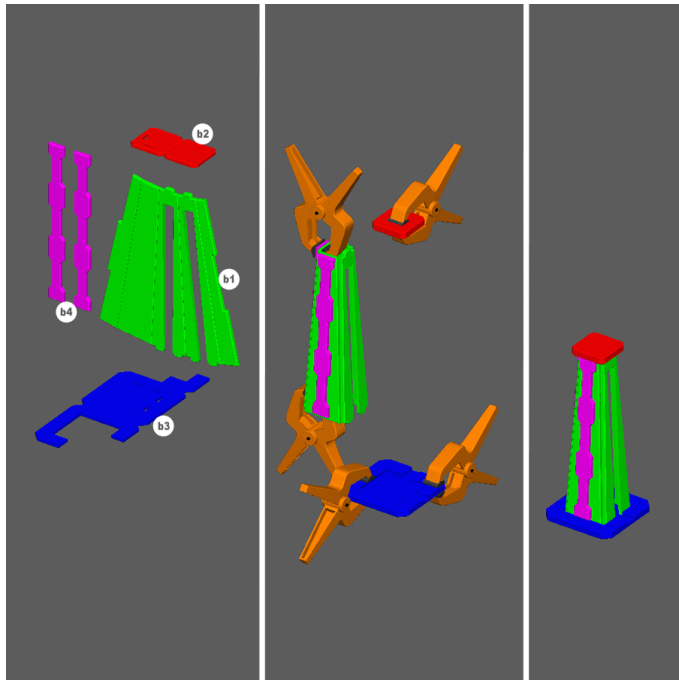
Fold, glue, and clamp pieces C2 and C3 as shown.

Fold piece C1 as shown.

Glue pieces C4 to front and back of piece C1 as shown **MAKING SURE C4 IS ALIGNED TO TOP EDGE.**

Glue pieces together as shown.

Repeat two more times.



STEP 3 – 90° STANCHION

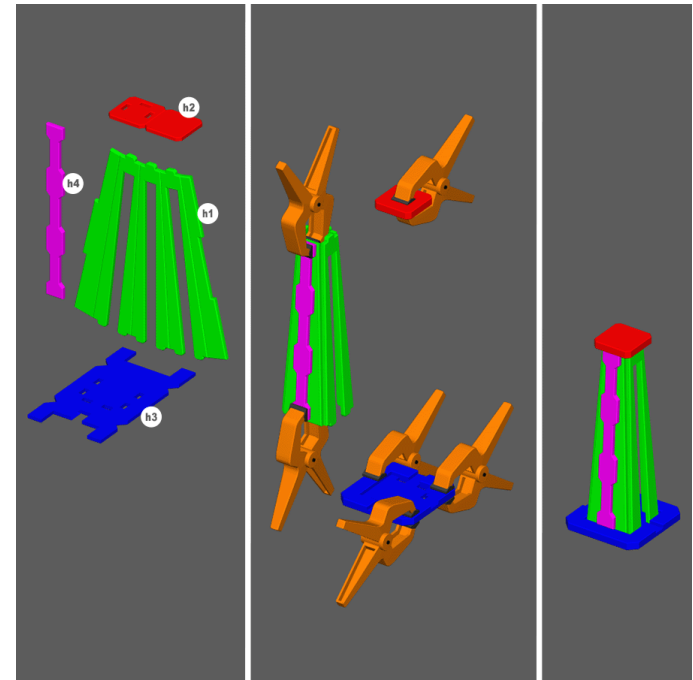
Fold, glue, and clamp pieces B2 and B3 as shown.

Fold piece B1 as shown.

Glue pieces B4 to front and back of piece B1 as shown MAKING SURE B4 IS ALIGNED TO TOP EDGE.

Glue pieces together as shown.

Repeat two more times.



STEP 4 – “T” STANCHION

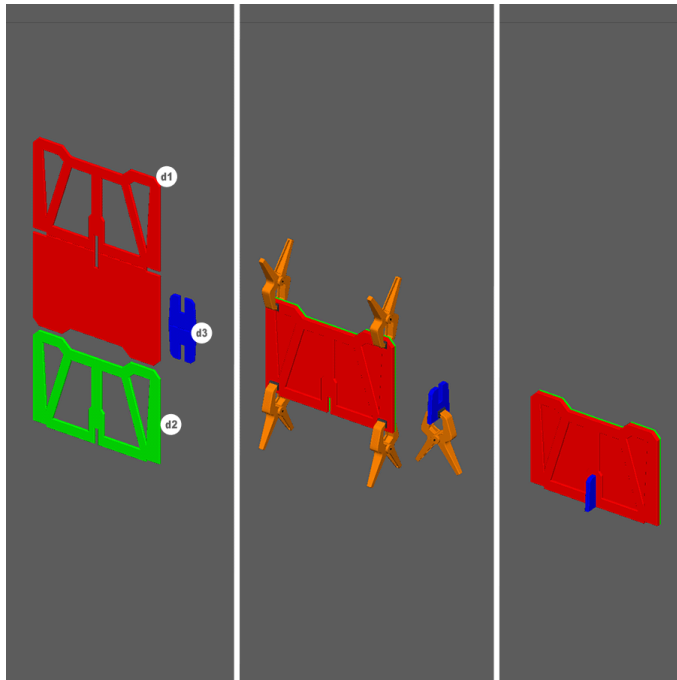
Fold, glue, and clamp pieces h2 and h3 as shown.

Fold piece h1 as shown.

Glue piece h4 to front of piece h1 as shown MAKING SURE h4 IS ALIGNED TO TOP EDGE.

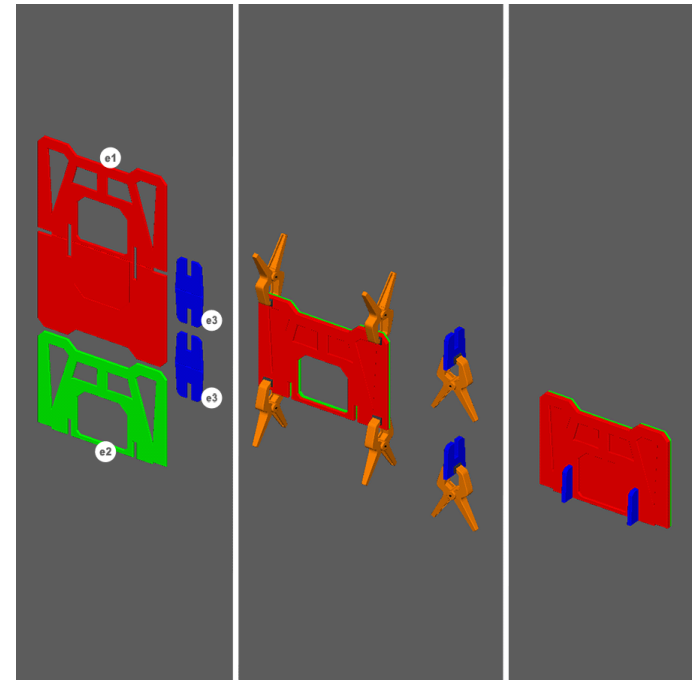
Glue pieces together as shown.

Repeat one more times.



STEP 5 – WALL SEGMENT

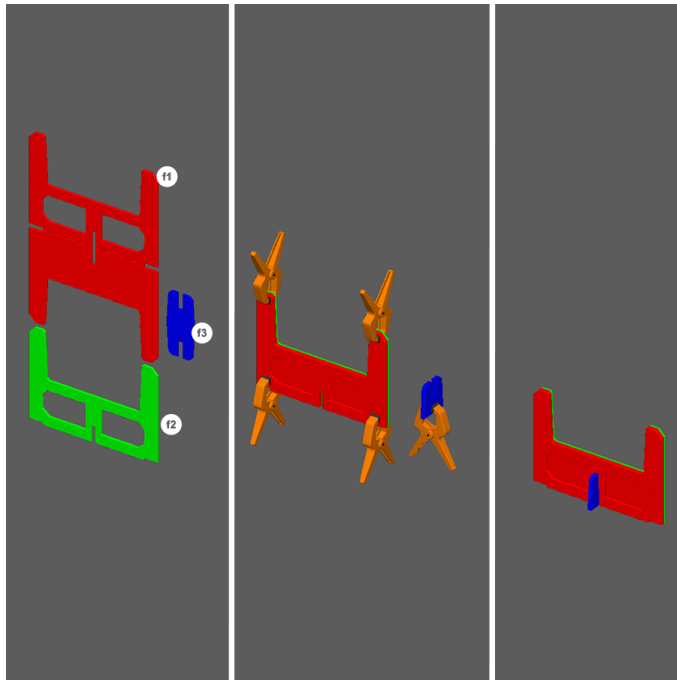
1. Fold, glue, and clamp all pieces as shown.
2. Glue piece d3 into the d1/d2 assembly so that it's flush on the bottom.
3. Repeat three more times.



STEP 6 – PERSONNEL WALL

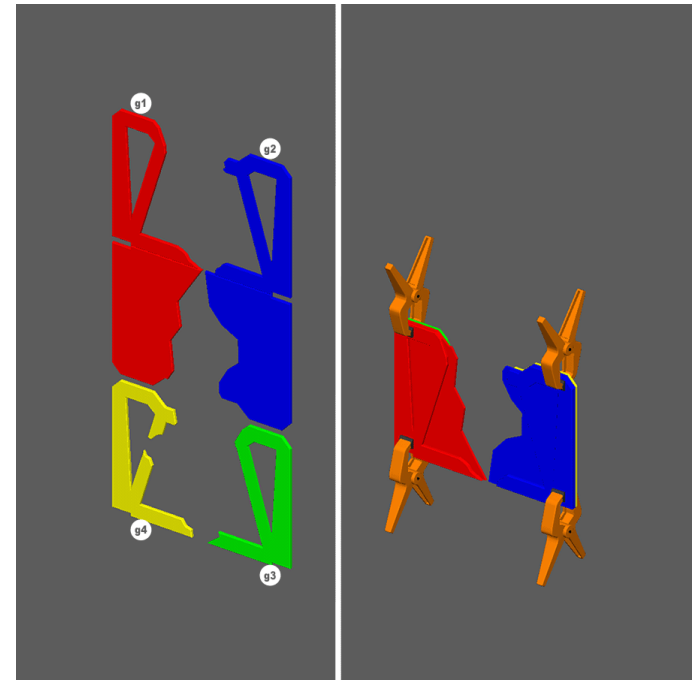
1. Pop out the door from piece e1
2. Fold, glue, and clamp all pieces as shown.
3. Glue both e3 pieces into the e1/e2 assembly so that it's flush on the bottom.

Note: Once the glue is dry the door piece is meant to slide in and out of the wall through the opening on the bottom.



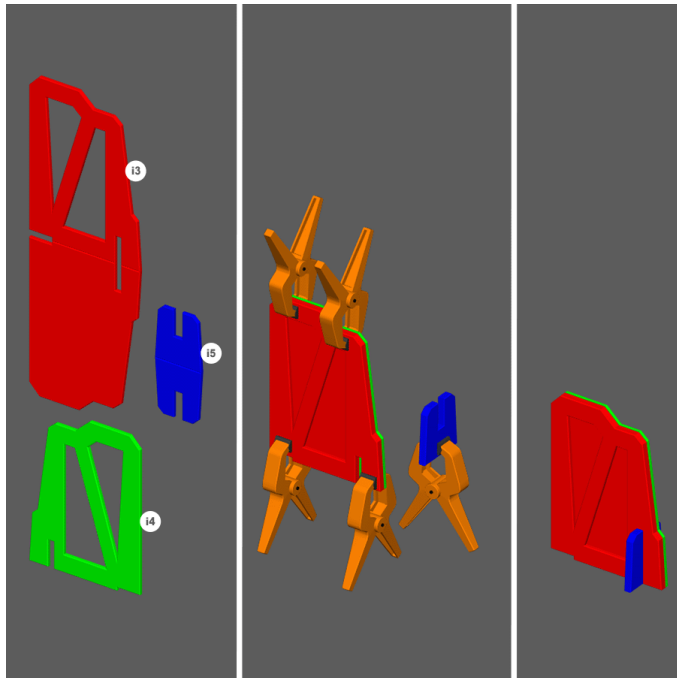
STEP 7 – MAGLEV WALL SEGMENT

1. Fold, glue, and clamp all pieces as shown.
2. Glue piece d3 into the d1/d2 assembly so that it's flush on the bottom.



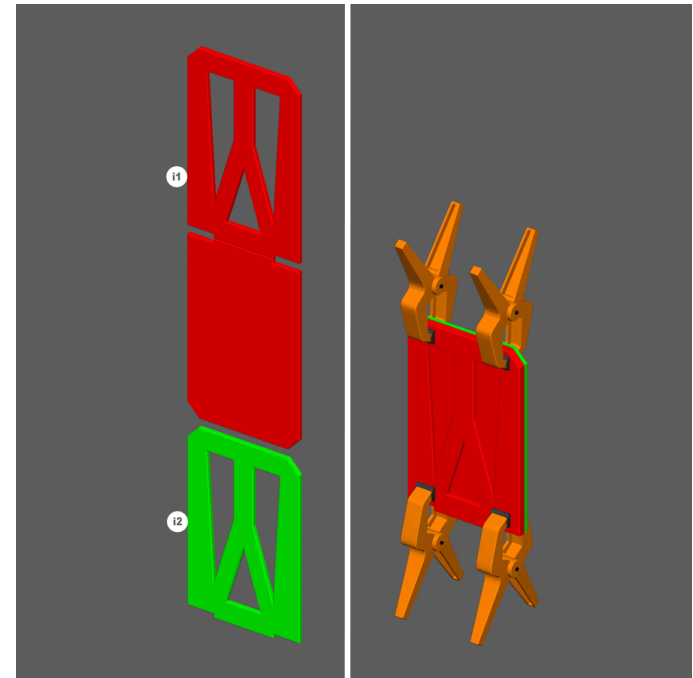
STEP 8 – DESTROYED WALL SEGMENT

1. Fold, glue, and clamp all pieces as shown.



STEP 9 – END WALL SEGMENT

1. Fold, glue, and clamp all pieces as shown.
2. Glue piece 15 into the 13/14 assembly so that it's flush on the bottom.
3. Repeat once more



STEP 10 – HALF WALL SEGMENT

1. Fold, glue, and clamp all pieces as shown.
2. Repeat once more



YOU'VE FINISHED THE PERIMETER WALL

Time to move on to [another set!](#)

