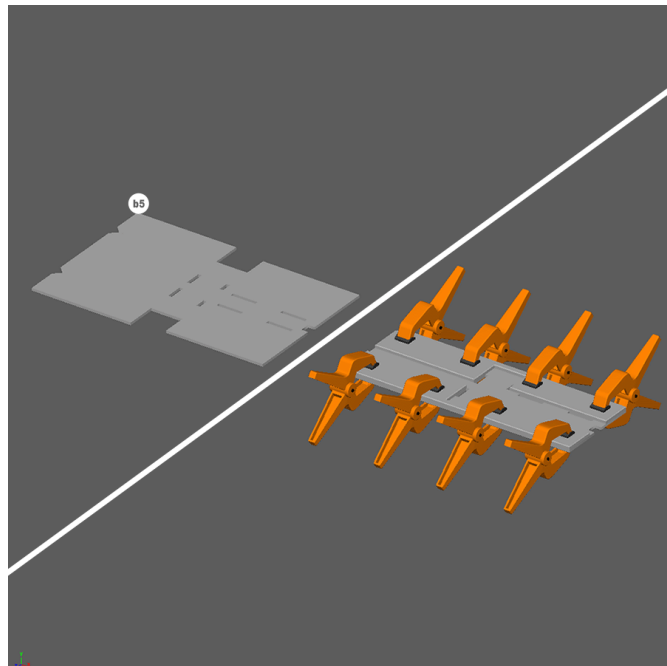


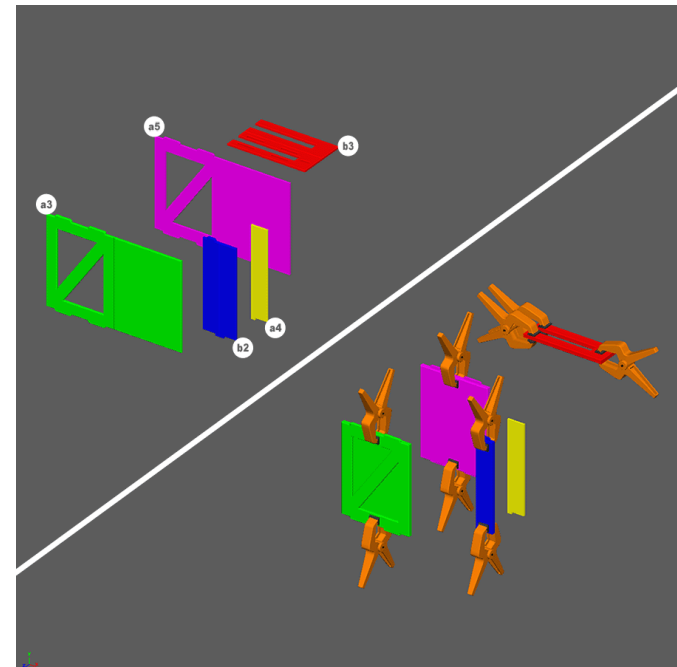


PERIMETER GATE BUILD INSTRUCTIONS



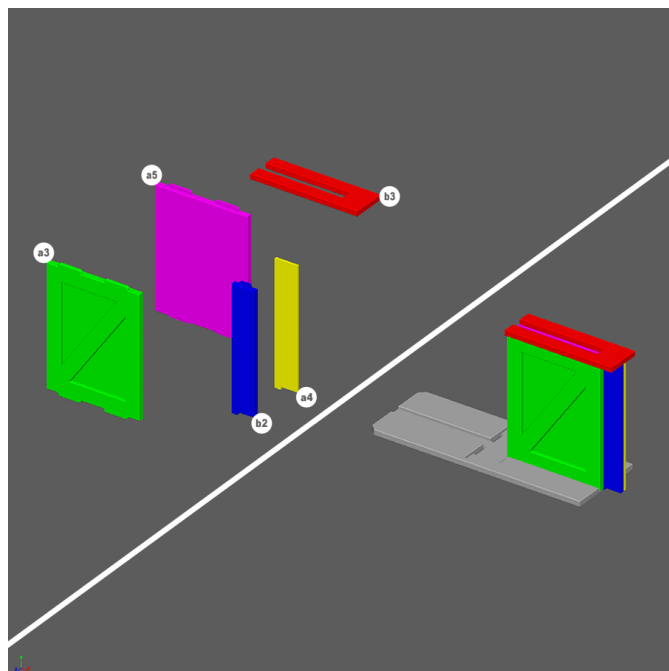
STEP 1

1. Fold, glue, and clamp pieces as shown to create the **gate base**.



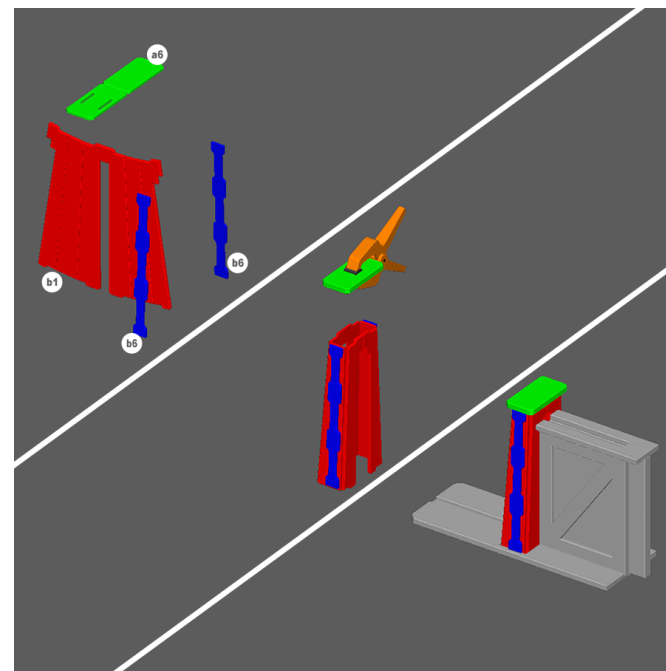
STEP 2

1. Fold, glue, and clamp pieces as shown.



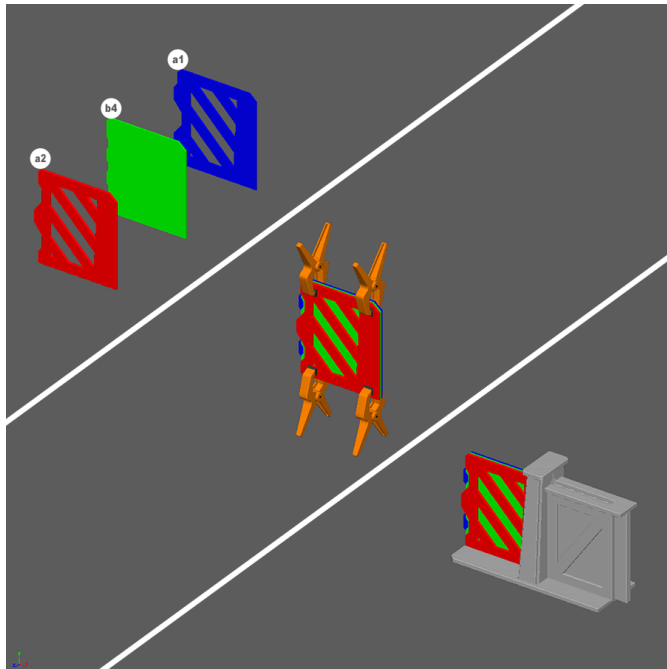
STEP 3

1. Glue pieces b2 and a4 together.
2. Assemble pieces as shown to create the **wall** and then attach to the **gate base** as shown to create the **wall structure**.



STEP 4

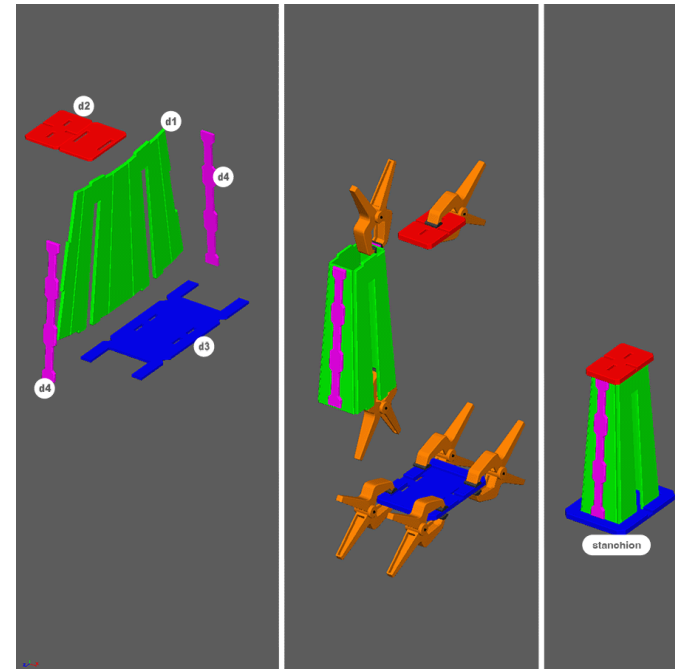
1. Fold, glue, and clamp pieces as shown.
2. Glue both b6 pieces to each side of piece b1 as shown, making sure that both b6 pieces are aligned to the top edge of piece b1.
3. Attach piece a6 to the b1 assembly and then glue onto **wall structure** as shown.



STEP 5

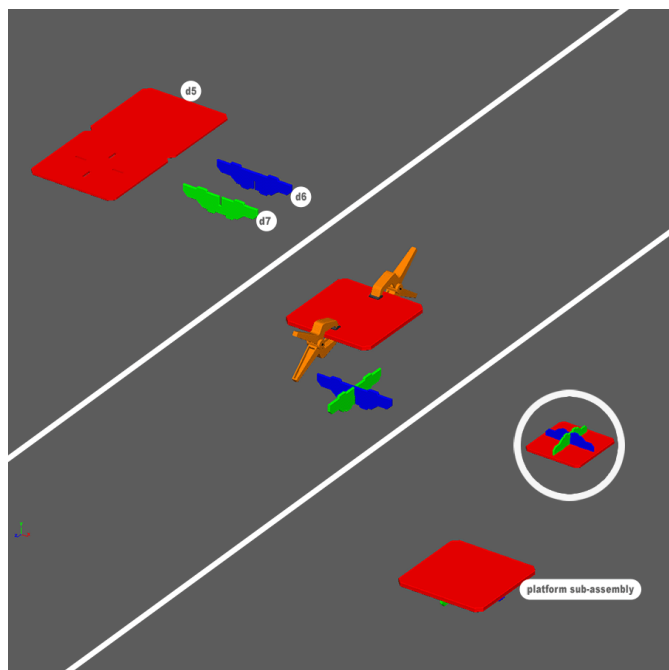
1. Glue and clamp as shown to create the **Gate**.
2. Repeat steps 1-5 to create the other half of the gate assembly.

NOTE: Do not glue the gate into the wall structure. This is a sliding gate.



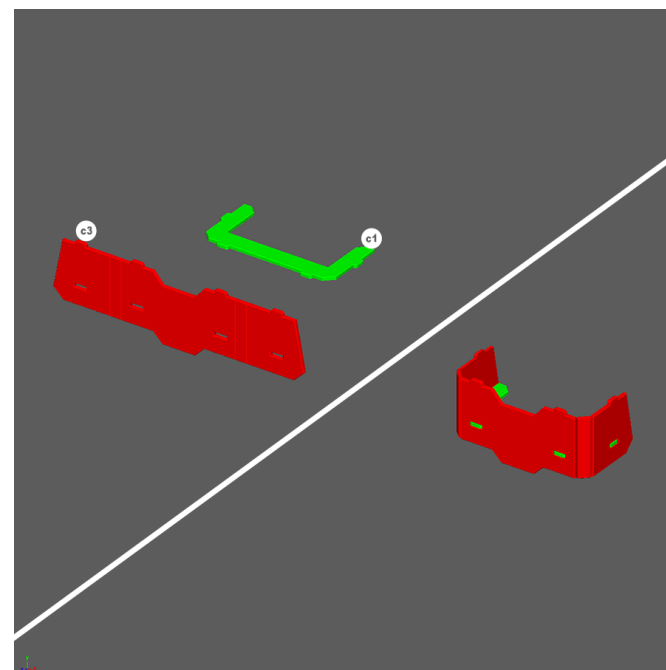
STEP 6

1. Fold, glue, and clamp pieces as shown.
2. Glue both d4 pieces to each side of piece d1 as shown making sure that the d4 pieces are aligned to the top edge of piece d1.
3. Attach piece d2 and d3 to the d1 assembly to create a **stanchion**.



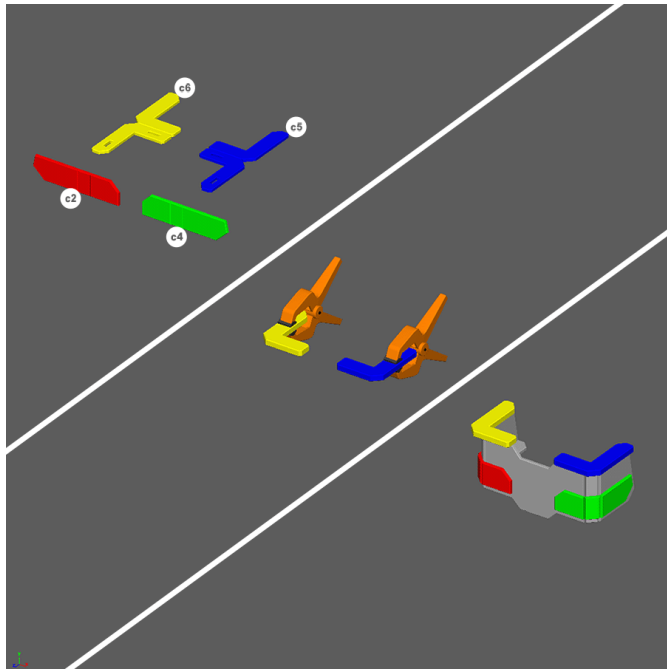
STEP 7

1. Fold, glue, and clamp all pieces as shown.
2. Glue pieces d6 and d7 together and then glue to d5 to create the **platform sub-assembly**.



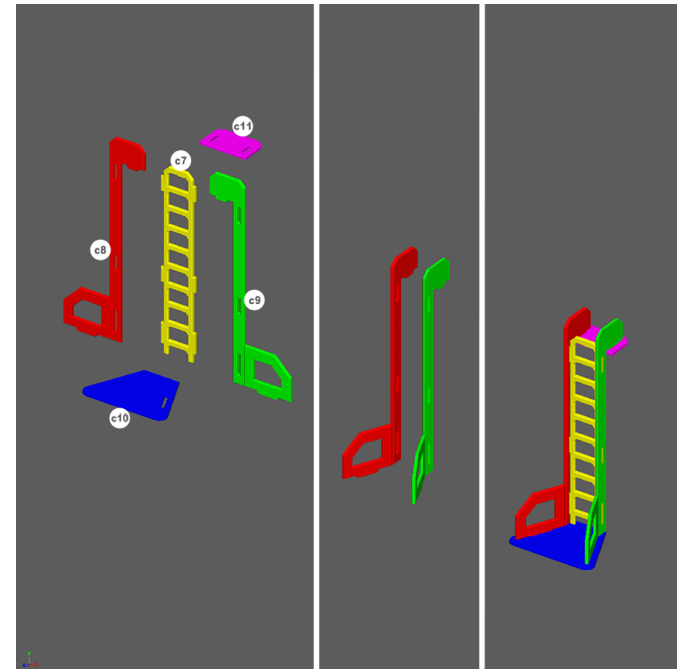
STEP 8

1. Fold and glue c1 to c3 as shown.



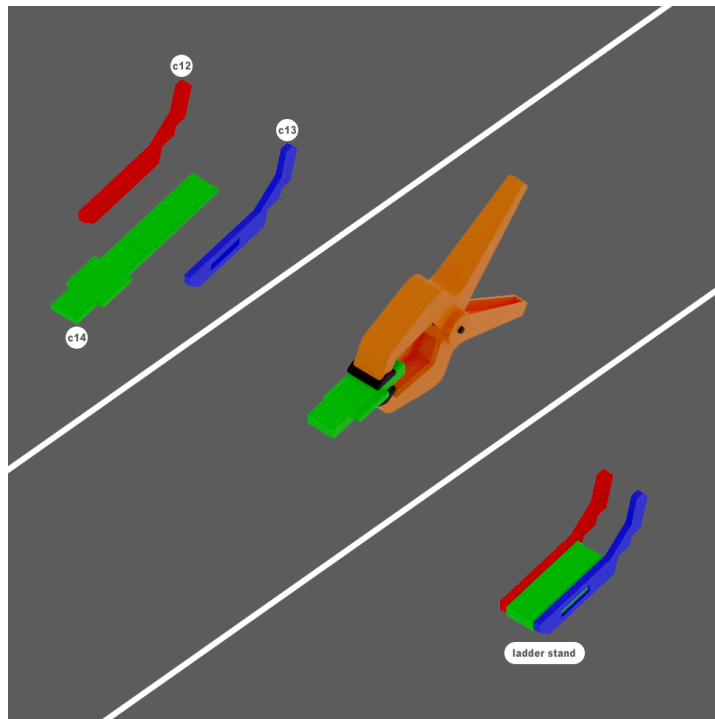
STEP 9

1. Fold, glue, and clamp pieces c5 and c6 as shown.
2. Glue pieces c5 and c6 to top of structure as shown.
3. Fold and glue pieces c2 and c4 to sides of structure as shown to create the **cover**.



STEP 10

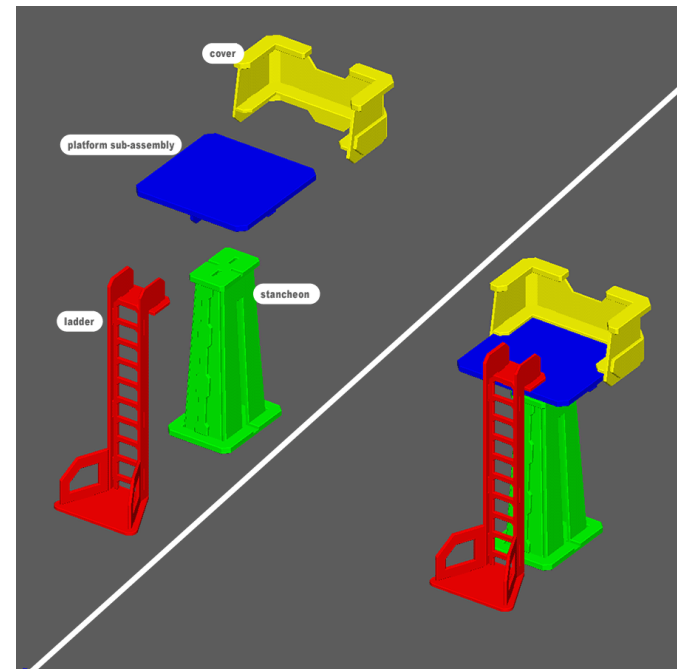
1. Fold pieces c8 and c9 as shown.
2. Glue pieces together as shown to create a **ladder**.



STEP 11

1. Fold, glue, and clamp piece c14 as shown.
2. Glue and attach pieces c12 and c13 to create a **ladder stand**.

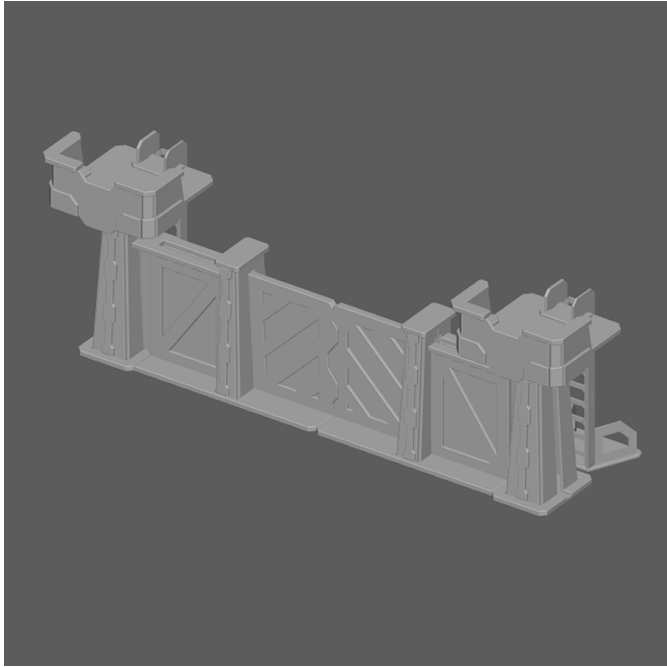
Note: These are for miniatures to stand on. They have notches to adjust for ladder pitch and can be moved throughout play to give your game a more accurate line of sight when using ladders.



STEP 12

1. Glue the platform **sub-assembly** to the **stanchion**.
2. The **cover** and **ladder** slot into place without glue.
3. Repeat steps 6-11 once more to create the second guard tower.

NOTE: Do not glue the cover and ladder pieces to the platform. They are meant to break down for easy storage.



YOU'VE FINISHED THE PERIMETER GATE

Time to move on to [another set!](#)

