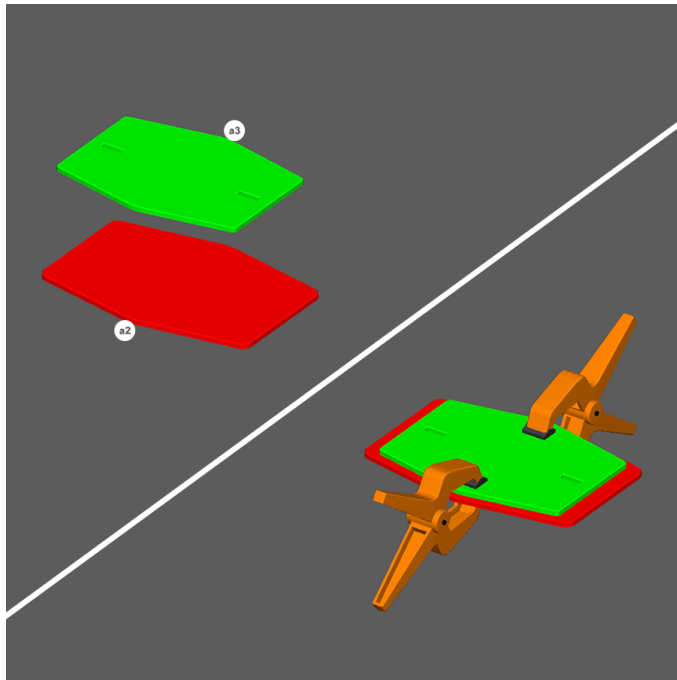


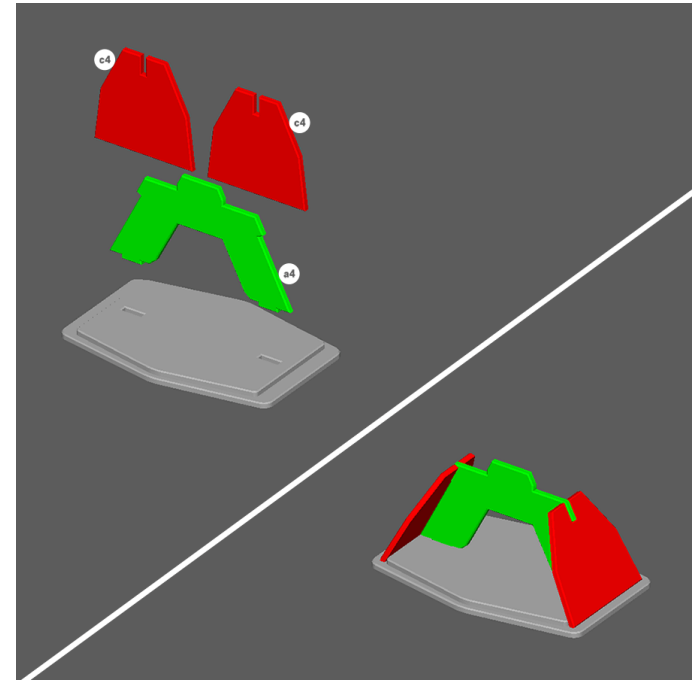


## MAGLEV RAIL STARTER BUILD INSTRUCTIONS



### STEP 1

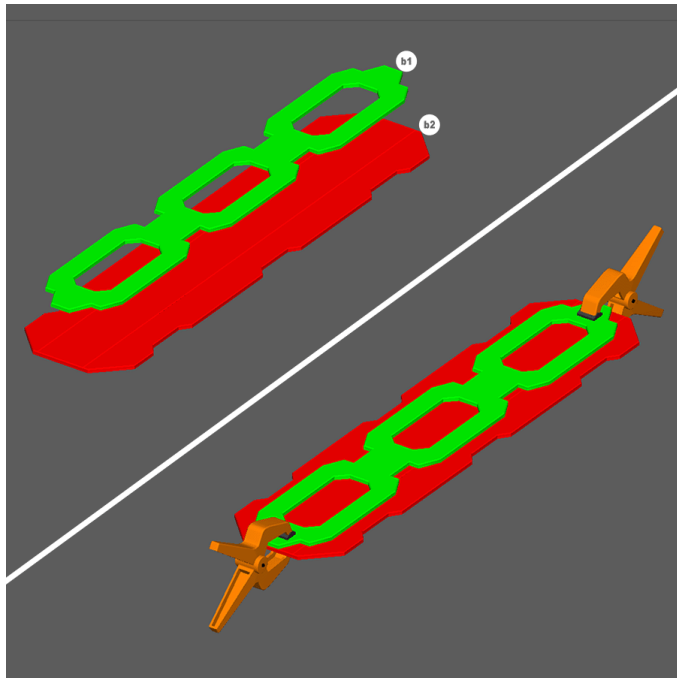
1. Glue and clamp a2 and a3 as shown to create a **foot base**.



### STEP 2

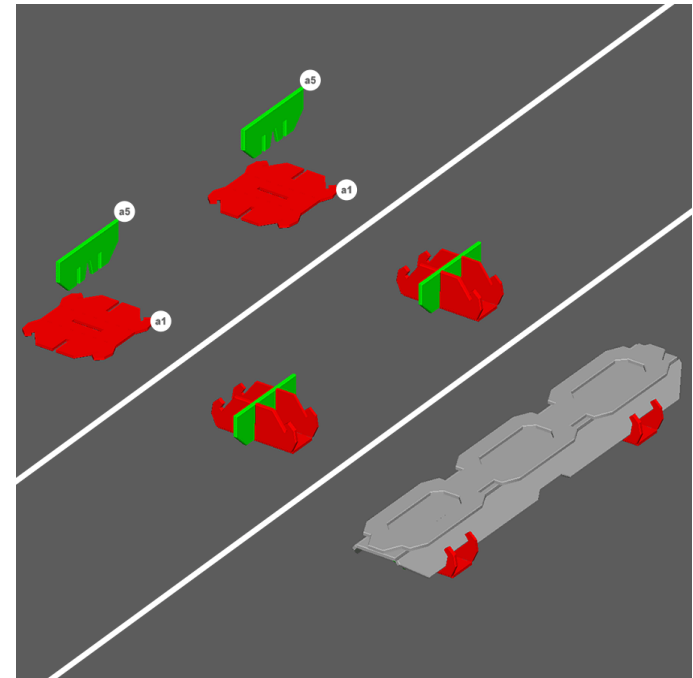
1. Glue a4 and both c4 pieces to the **foot base** as shown to complete a **foot assembly**.

**Note:** Repeat steps 1 and 2 for all of the feet in the set.



### STEP 3

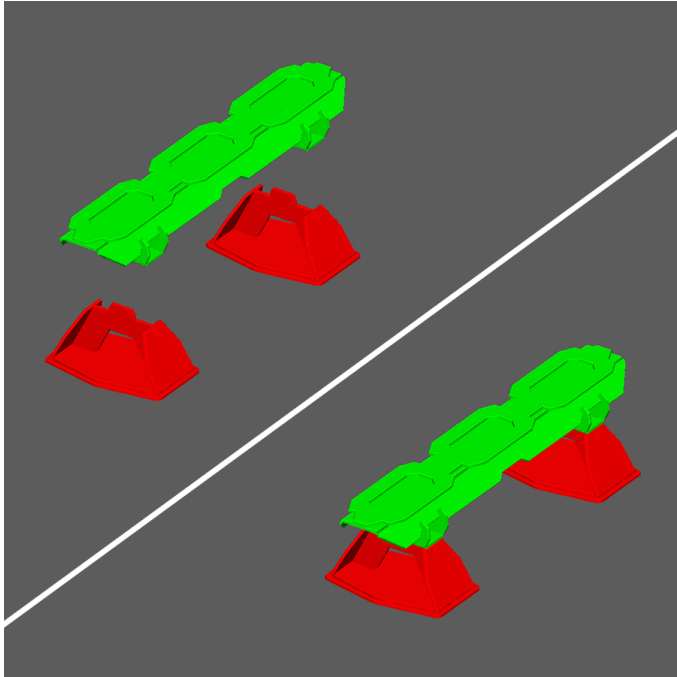
1. Glue and clamp b1 and b2 as shown to create a **straight rail top assembly**.



### STEP 4

1. Glue pieces a1 and a5 as shown to create **support assemblies**.

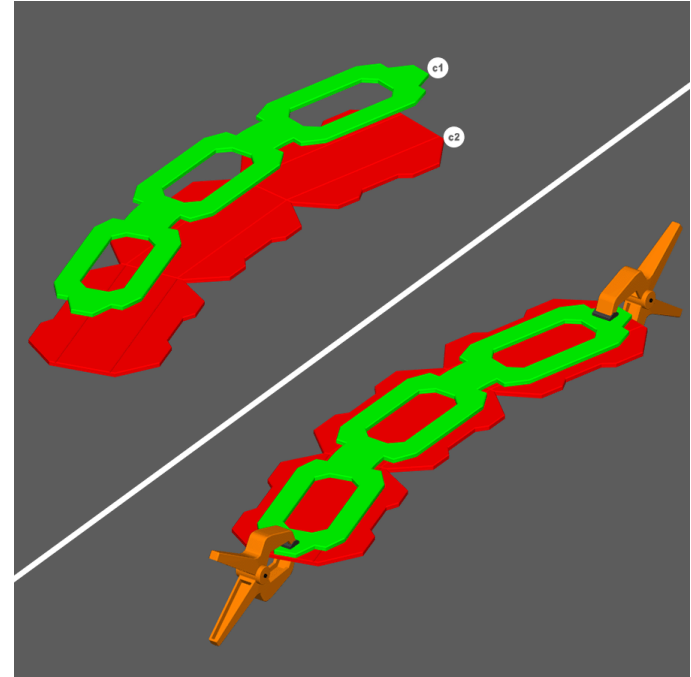
2. Glue both **support assemblies** onto the **straight rail top assemblies** as shown to complete a **straight rail piece**.



### STEP 5

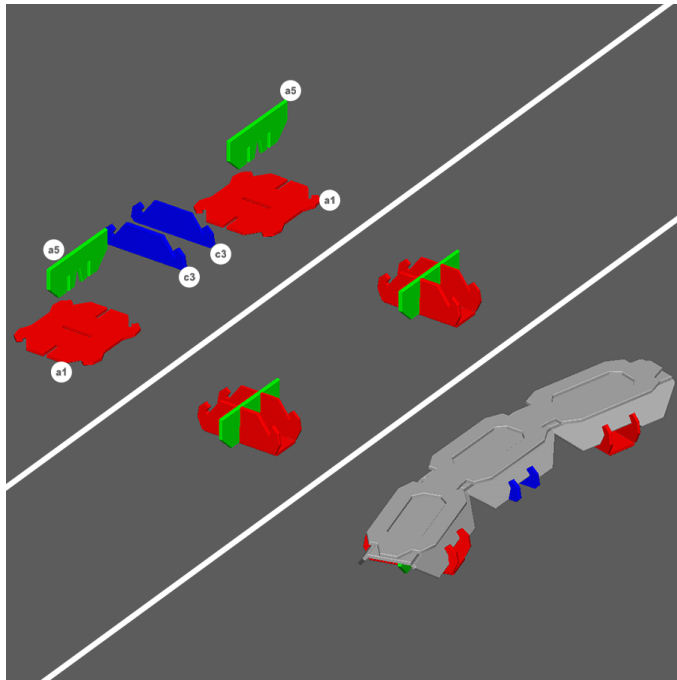
1. Insert tabs on the **foot assembly** into the slots on bottom side of **straight rail** as shown.

**Note: Do Not Use Glue** as these pieces are meant to be removable for storage. Repeat steps 3-5 for all of the straight rails in the set.



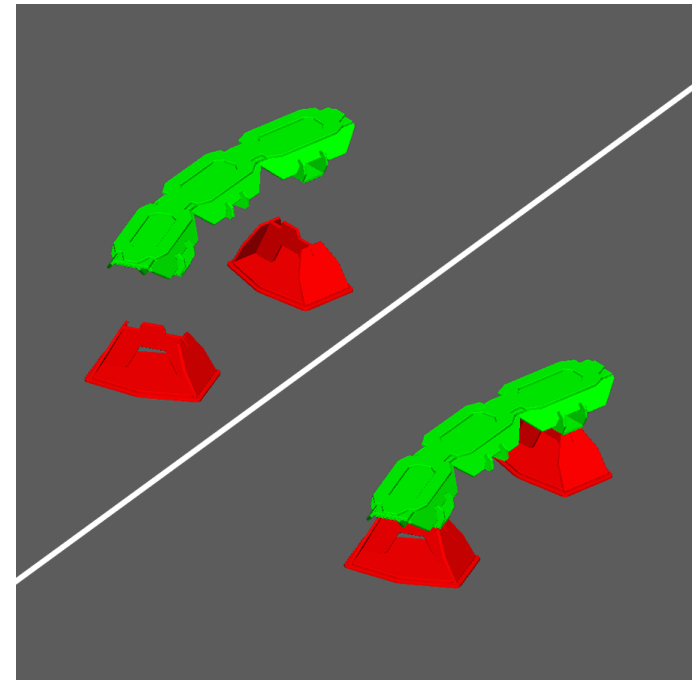
### STEP 6

1. Glue and clamp c1 and c2 as shown to create a **curved rail top assembly**.



### STEP 7

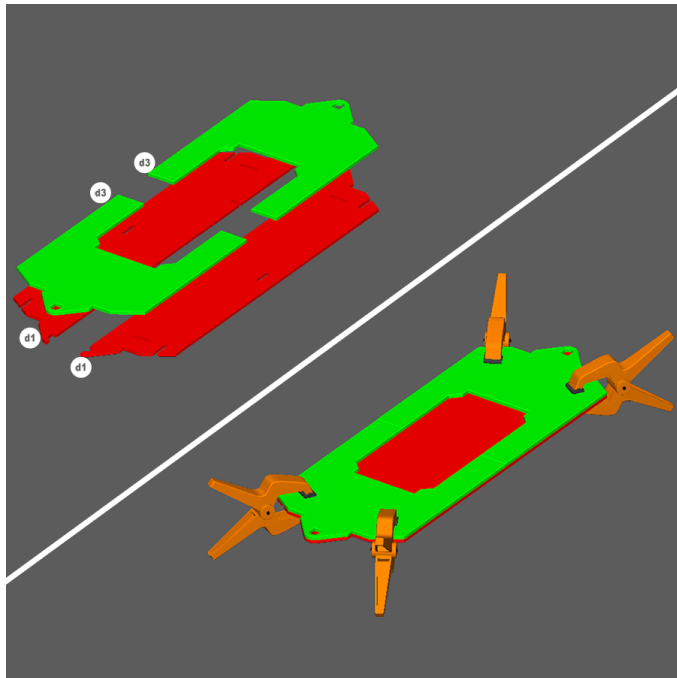
1. Glue and assemble pieces a1 and a5 as shown to create **support assemblies**.
2. Glue both **support assemblies** onto the **curved rail top assemblies** as shown.
3. Glue and assemble pieces c3 as shown to complete a **curved rail** piece.



### STEP 8

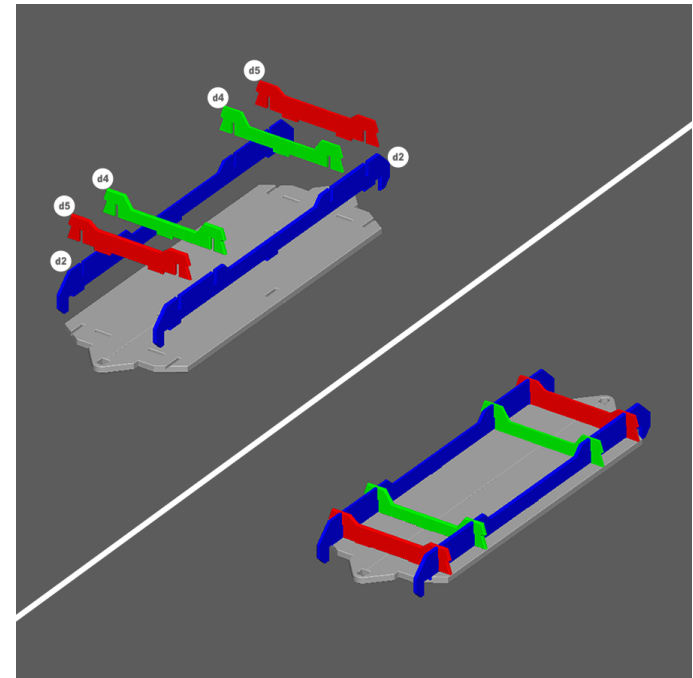
1. Insert tabs on the **foot assembly** into the slots on bottom side of **curved rail** as shown.

**Note:** Do Not Use Glue as these pieces are meant to be removable for storage. Repeat steps 6-8 for all of the curved rails in the set.



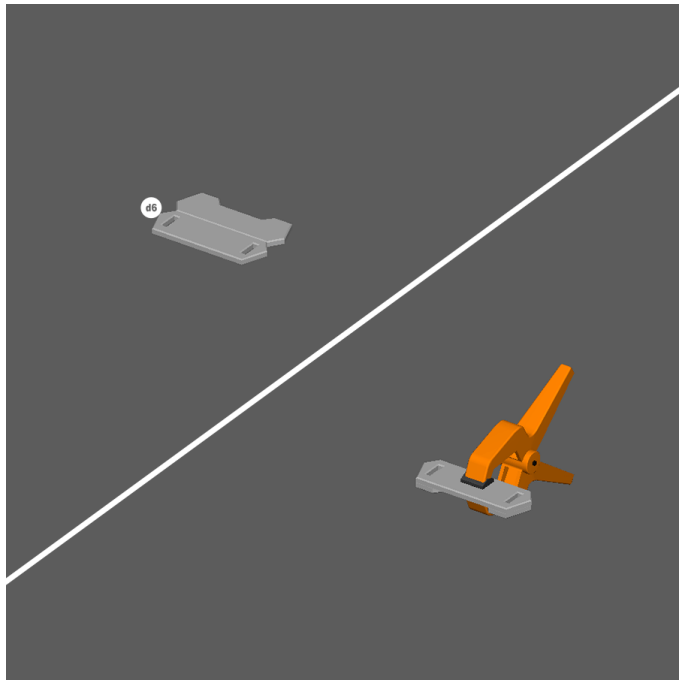
### STEP 9

1. Glue and clamp both d1 and both d3 pieces as shown.



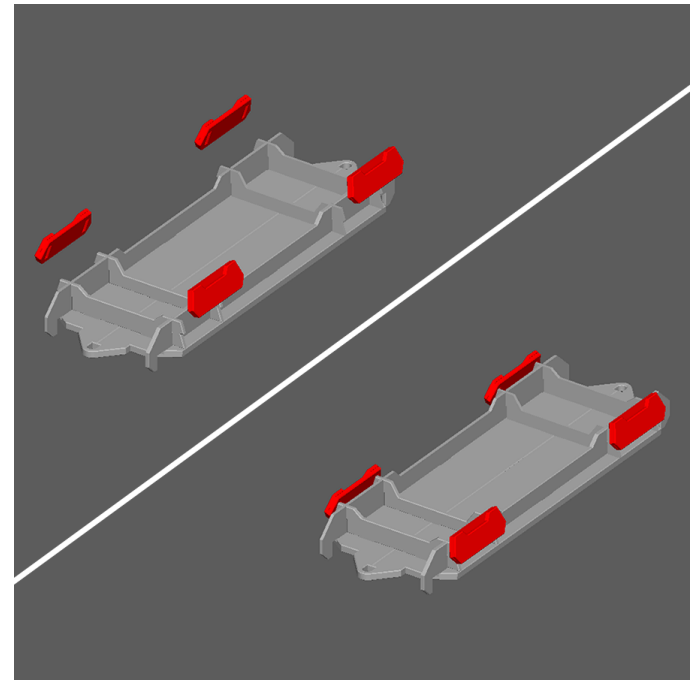
### STEP 10

1. Glue both d2 pieces to the **bed assembly** as shown.
2. Then glue both d4 and both d5 pieces to the **bed assembly** as shown to create the **rail car bed assembly**.



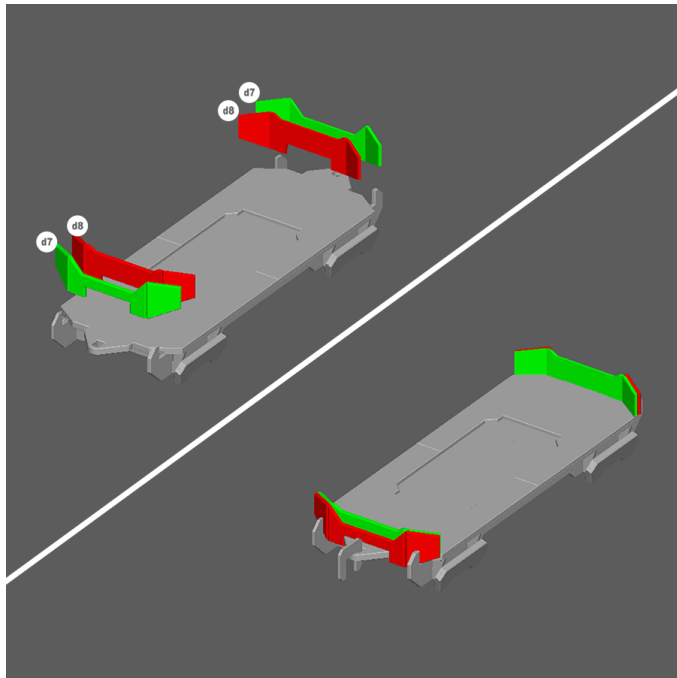
### STEP 11

1. Glue and clamp d6 as shown to create a **maglev assembly**.
2. Repeat 3 more times.



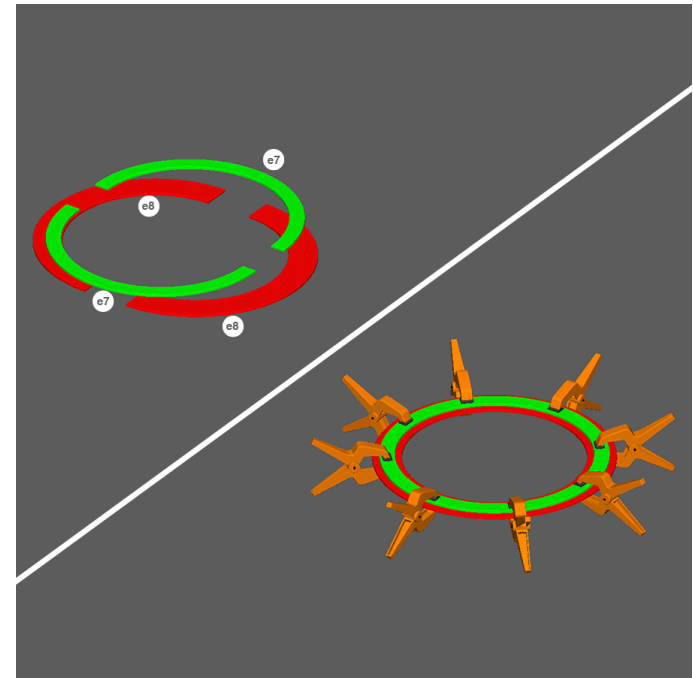
### STEP 12

1. Glue the four **maglev assemblies** to the **rail car bed assembly** as shown.



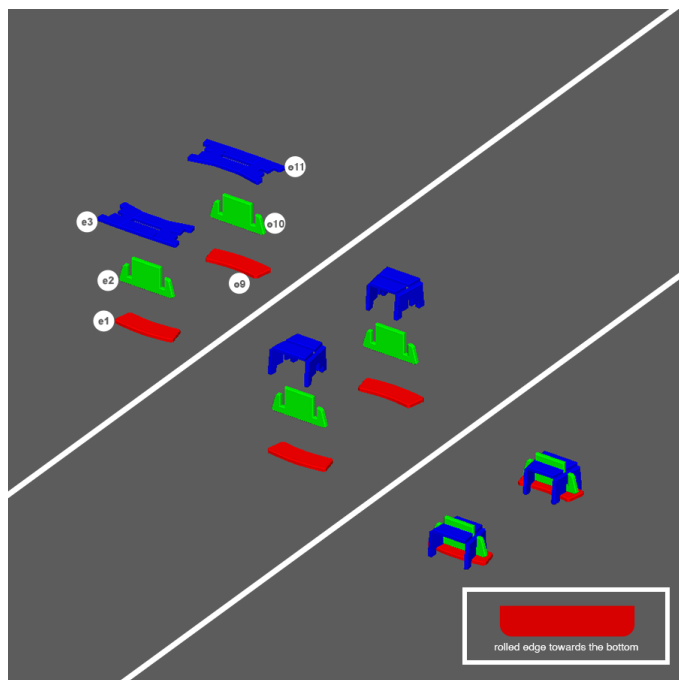
### STEP 13

1. Glue both pieces d7 to both pieces d8 and glue onto **rail car bed assembly** as shown to complete the **MagLev Rail Car**.



### STEP 14

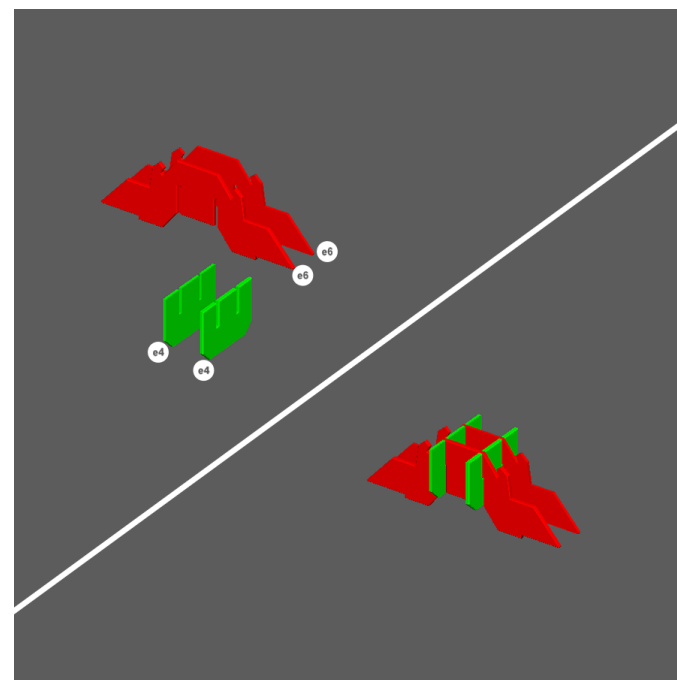
1. Glue and clamp both e7 and both e8 pieces as shown to create the **switch track**.



### STEP 15

1. Glue and assemble pieces e1, e2, and e3 as shown to create one of the **maglev assemblies**.
2. Glue and assemble pieces e9, e10, and e11 as shown to create one of the **maglev assemblies**.

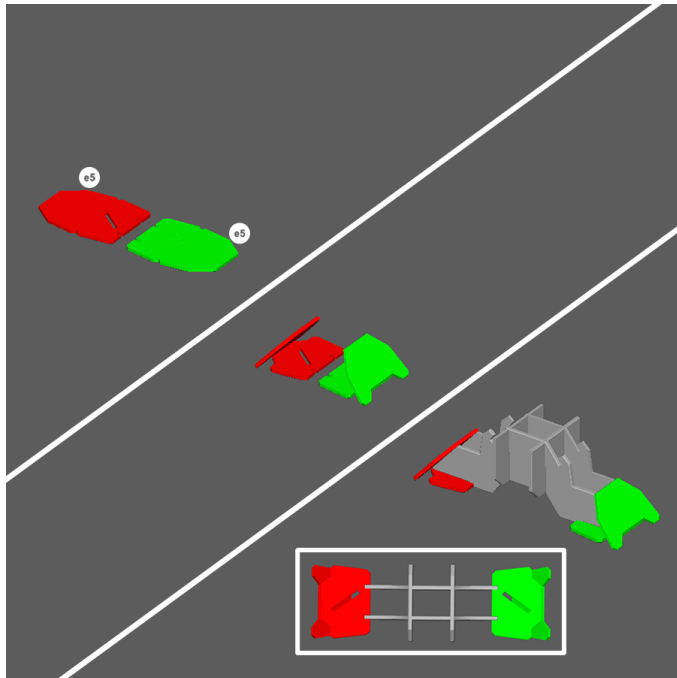
**Note:** Make sure that pieces e1/e9 and e3/e11 match curve directions. The rolled edge of pieces e1/e9 should be facing down when assembled. See image inset for rolled edge example.



### STEP 16

1. Glue and assemble both e4 and both e5 pieces as shown to make a **support sub-assembly**.
2. Repeat one more time.

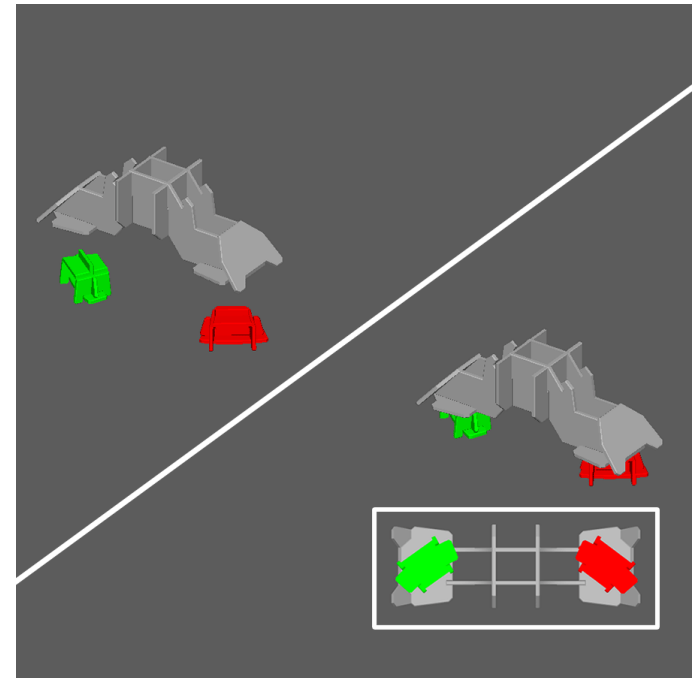




### STEP 17

1. Glue both e5 pieces to the **support sub-assemblies** as shown.
2. Repeat one more time to create the **support assemblies**.

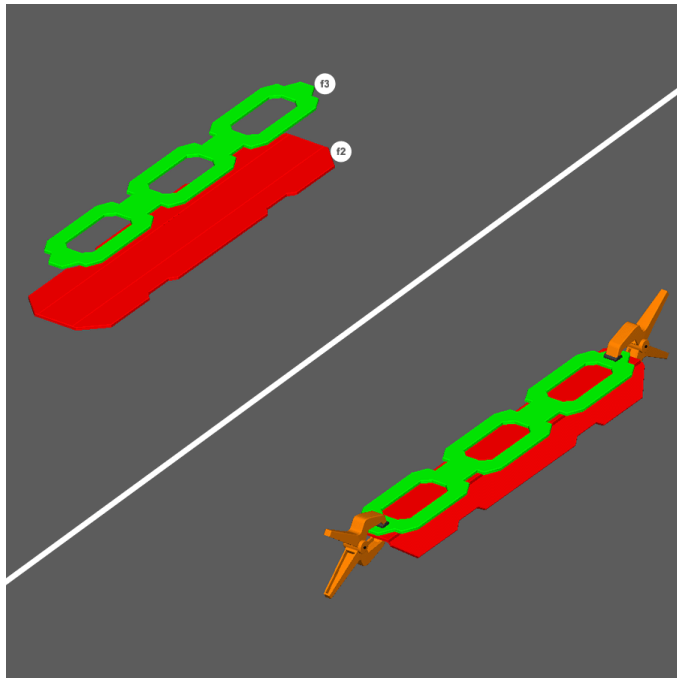
**Note:** When finished the slots on the bottom of pieces e5 should face in different directions as shown in image inset.



### STEP 18

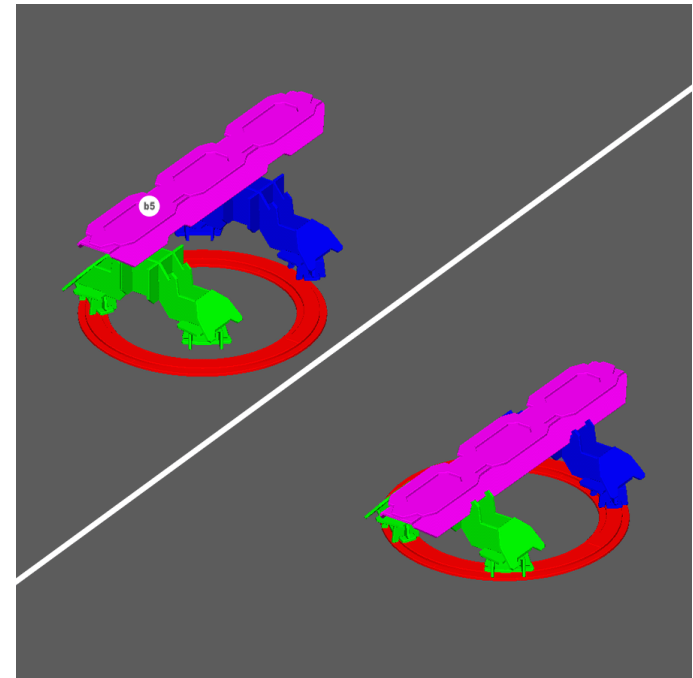
1. Glue both **maglev assemblies** to the **support assemblies** as shown.

**Note:** When finished the curve of the **maglev assemblies** should be oriented as shown in the image inset to fit the curve of the **switch track**.



### STEP 19

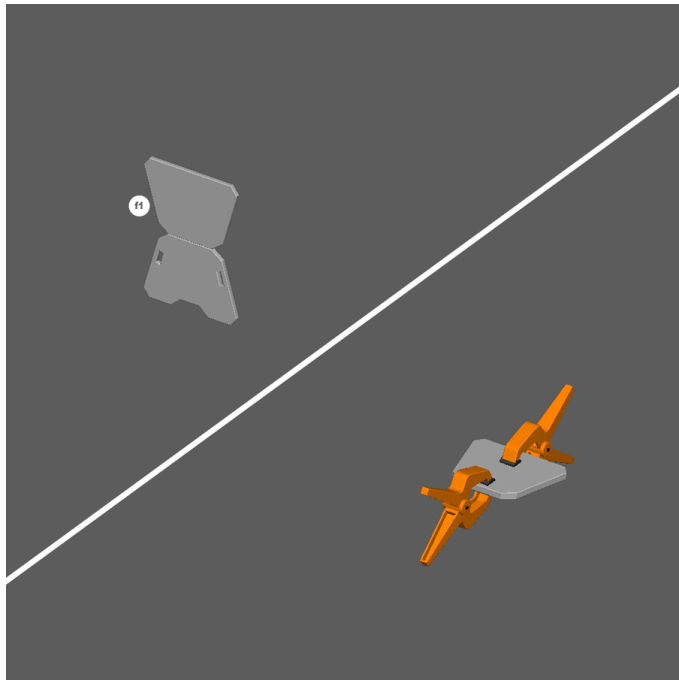
1. Glue and clamp f2 and f3 as shown to create the **switch rail**.



### STEP 20

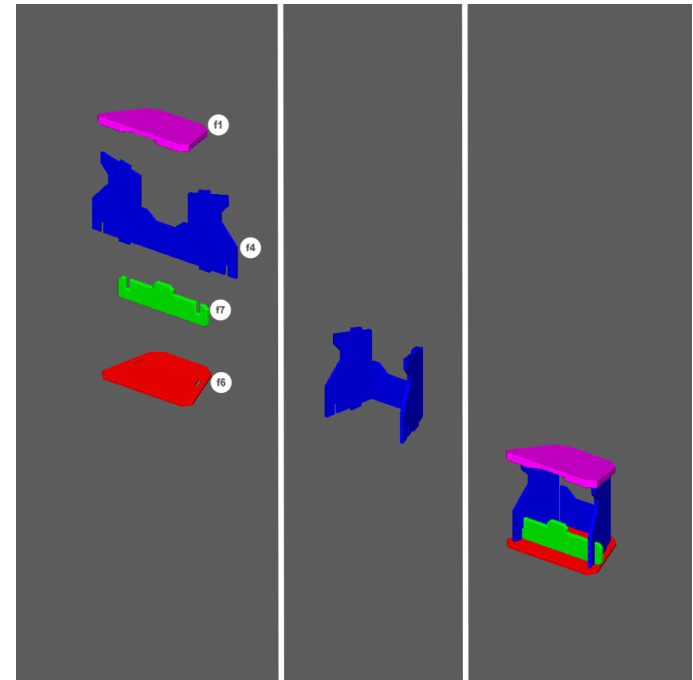
1. Assemble pieces as shown.

*Note: Do Not Glue these pieces.*



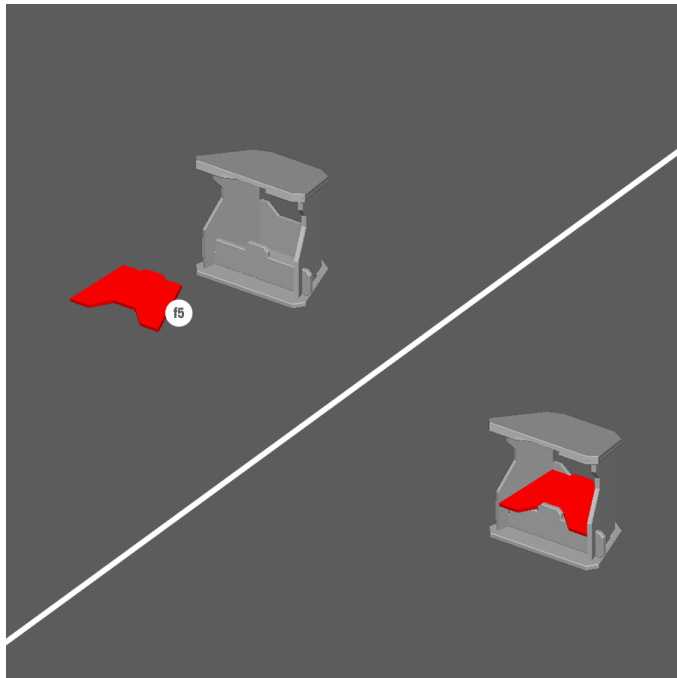
### STEP 21

1. Glue and clamp piece f1 as shown.



### STEP 22

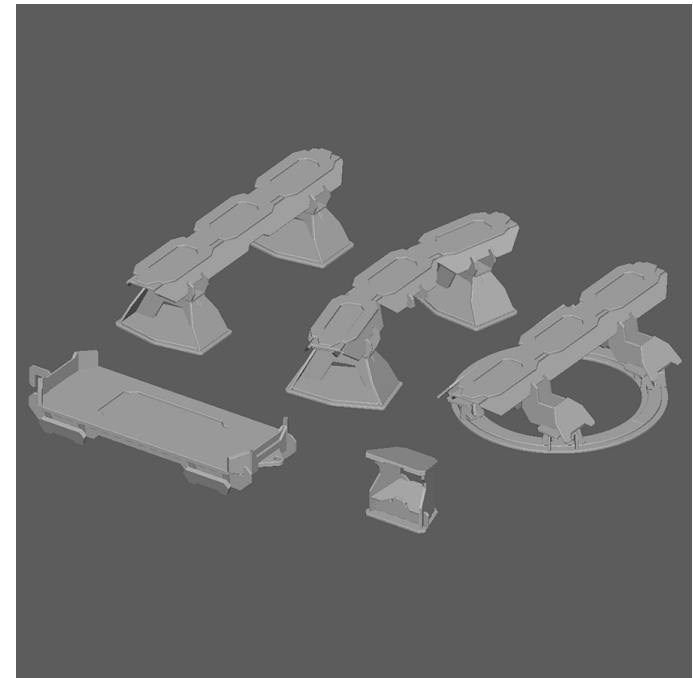
1. Fold and glue piece f4 to piece f7.
2. Glue and assemble with pieces f1 and f6 as shown.



### STEP 23

1. Piece f5 sits into place to create the switch control.

**Note:** Do not glue this part is reversible and can be used as an in game mechanic.



### YOU'VE FINISHED THE MAGLEV RAIL STARTER

Time to move on to [another set!](#)

