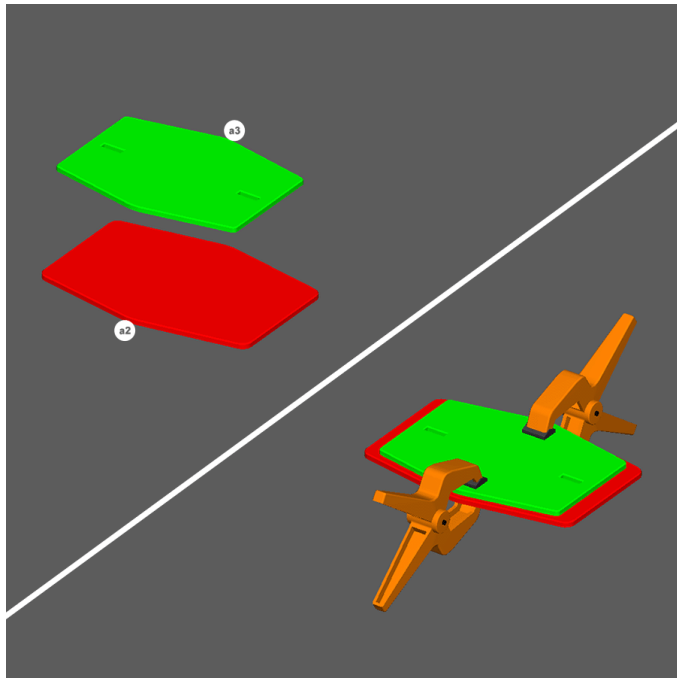


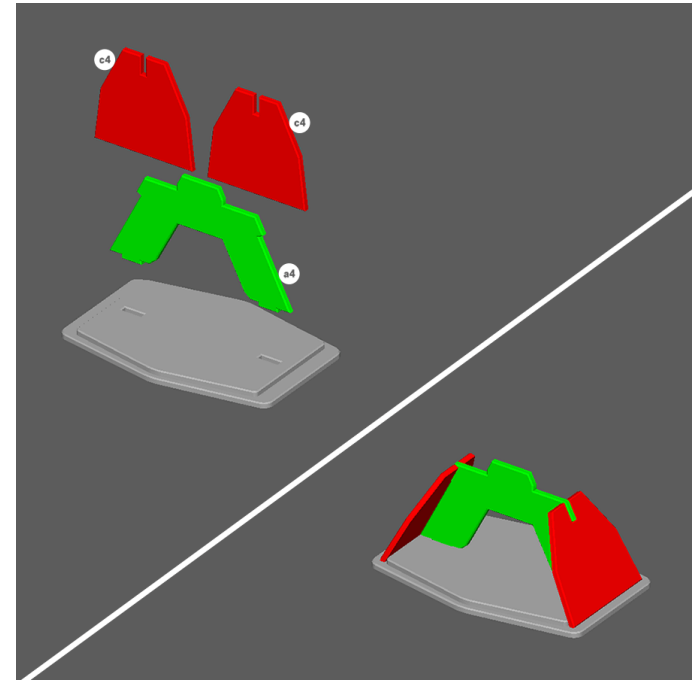


## MAGLEV RAIL ADD-ON BUILD INSTRUCTIONS



### STEP 1

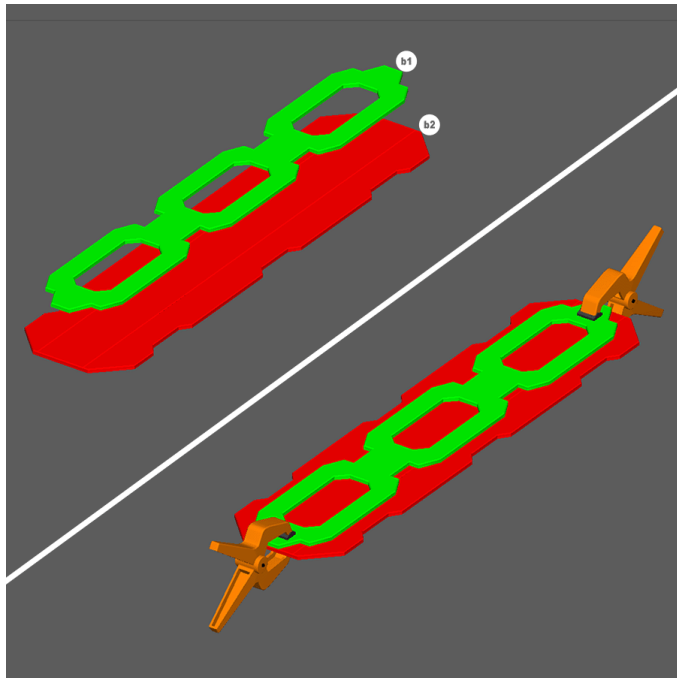
1. Glue and clamp a2 and a3 as shown to create a **foot base**.



### STEP 2

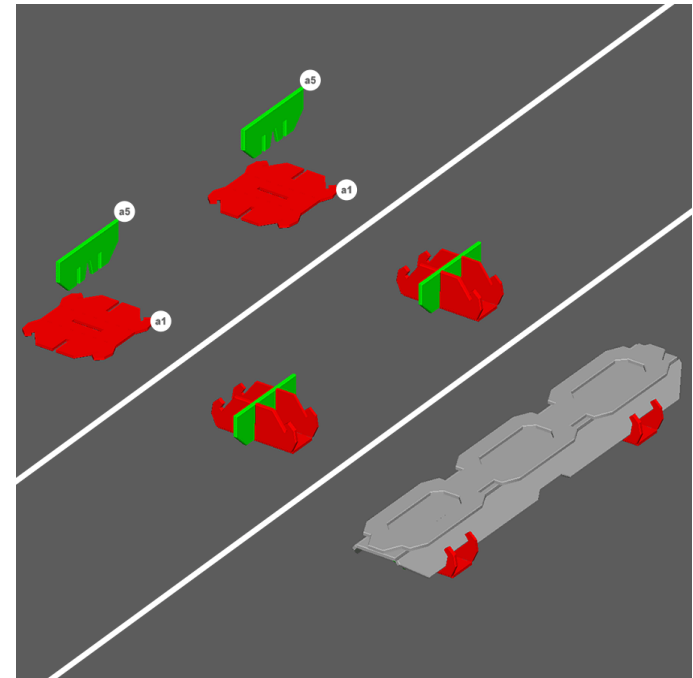
1. Glue a4 and both c4 pieces to the **foot base** as shown to complete a **foot assembly**.

**Note:** Repeat steps 1 and 2 for all of the feet in the set.



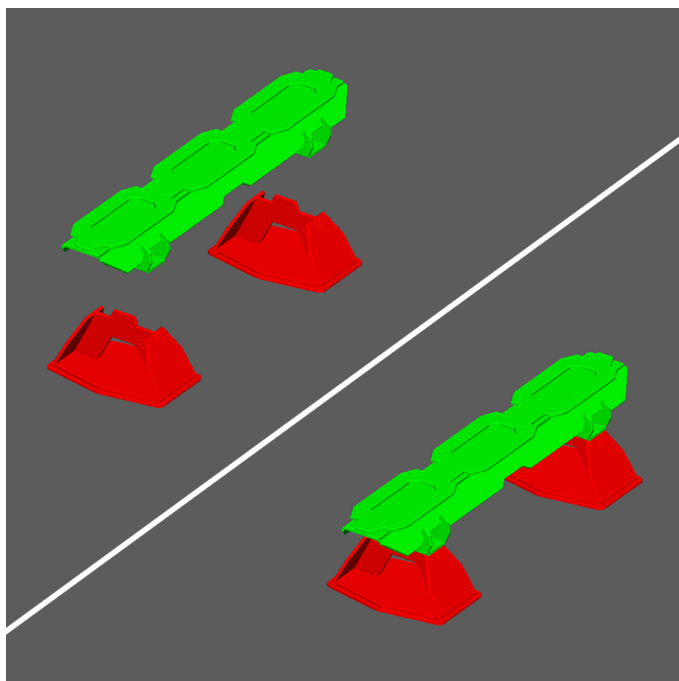
### STEP 3

1. Glue and clamp b1 and b2 as shown to create a **straight rail top assembly**.



### STEP 4

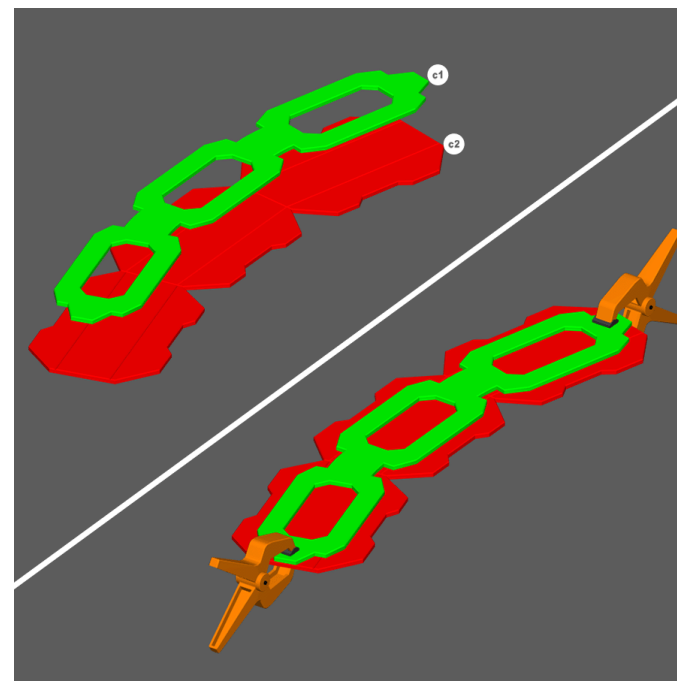
1. Glue pieces a1 and a5 as shown to create **support assemblies**.
2. Glue both **support assemblies** onto the **straight rail top assemblies** as shown to complete a **straight rail piece**.



### STEP 5

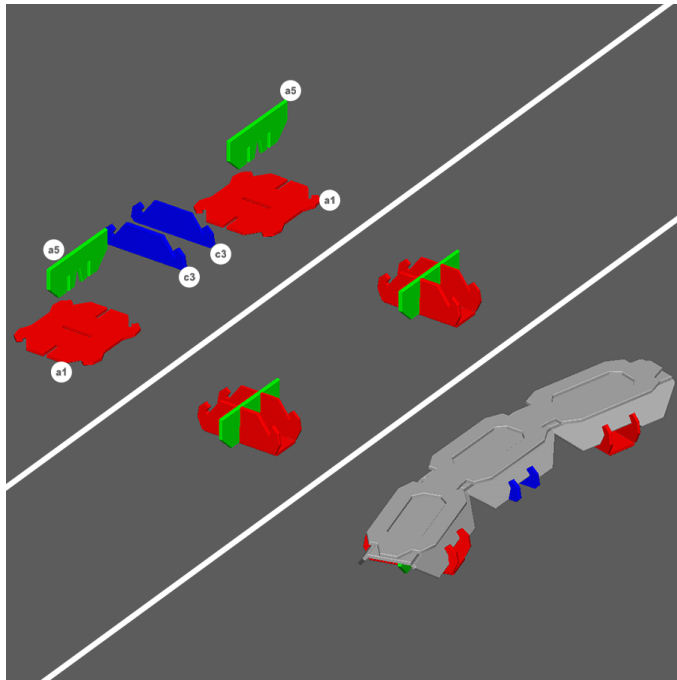
1. Insert tabs on the **foot assembly** into the slots on bottom side of **straight rail** as shown.

**Note:** Do Not Use Glue as these pieces are meant to be removable for storage. Repeat steps 3-5 for the other straight rail in the set.



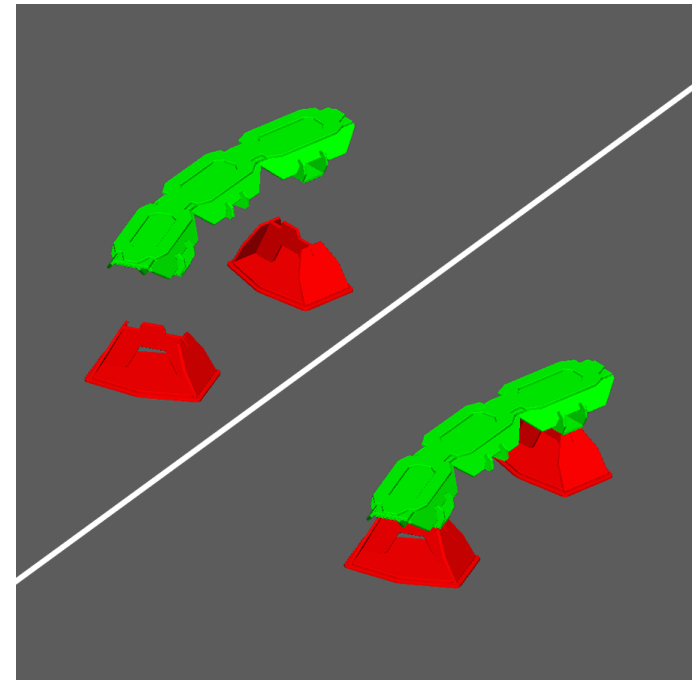
### STEP 6

1. Glue and clamp c1 and c2 as shown to create a **curved rail top assembly**.



### STEP 7

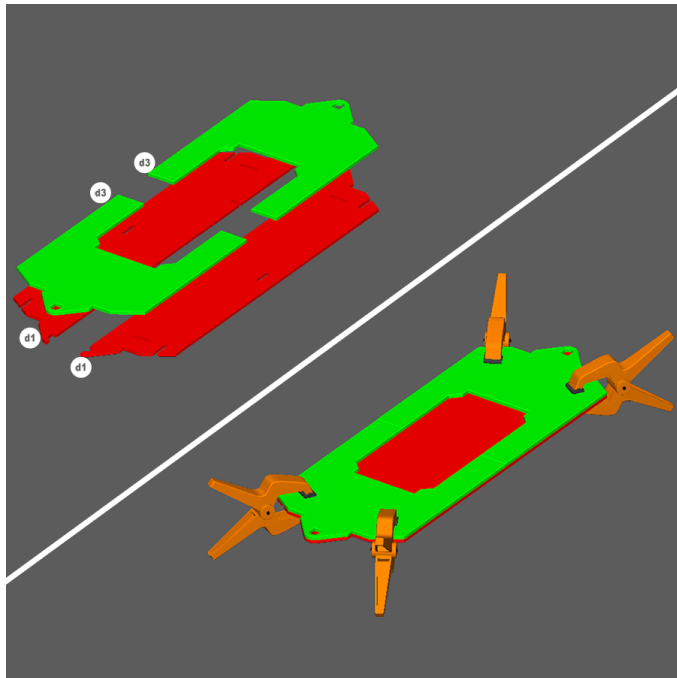
1. Glue and assemble pieces a1 and a5 as shown to create **support assemblies**.
2. Glue both **support assemblies** onto the **curved rail top assemblies** as shown.
3. Glue and assemble pieces c3 as shown to complete a **curved rail** piece.



### STEP 8

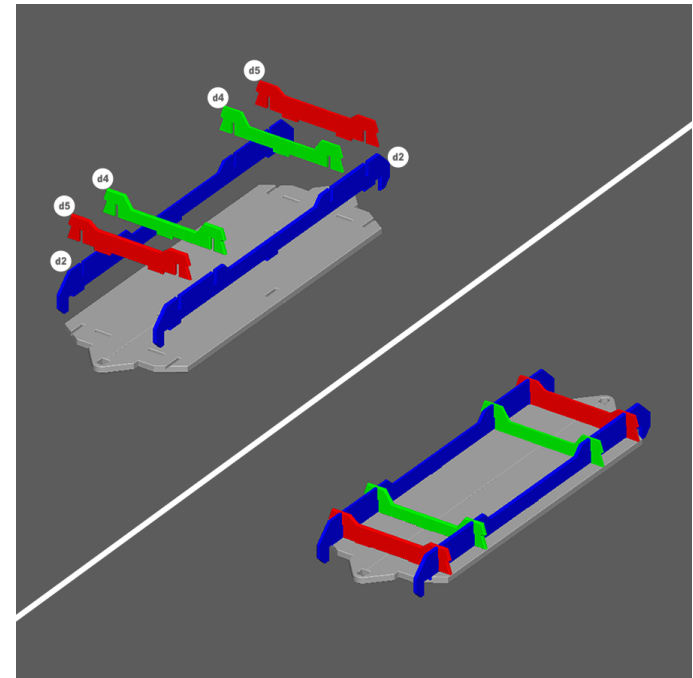
1. Insert tabs on the **foot assembly** into the slots on bottom side of **curved rail** as shown.

**Note:** Do Not Use Glue as these pieces are meant to be removable for storage.



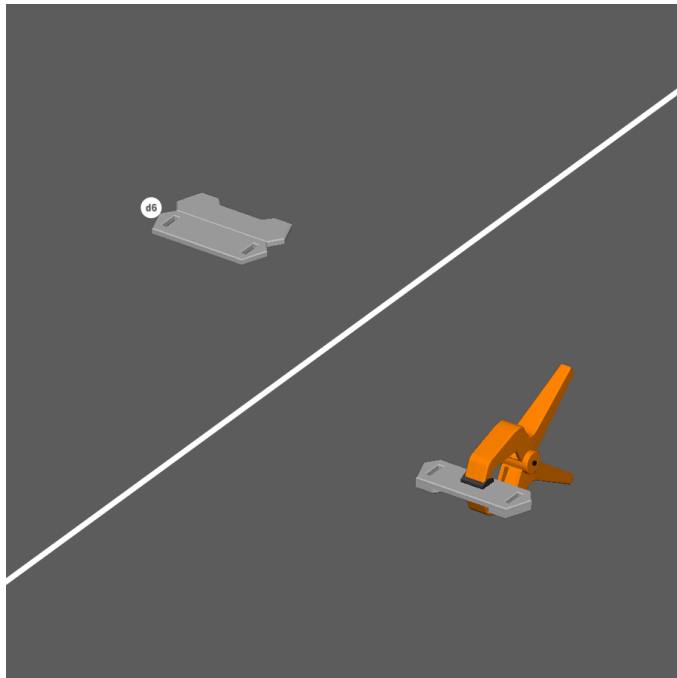
### STEP 9

1. Glue and clamp both d1 and both d3 pieces as shown.



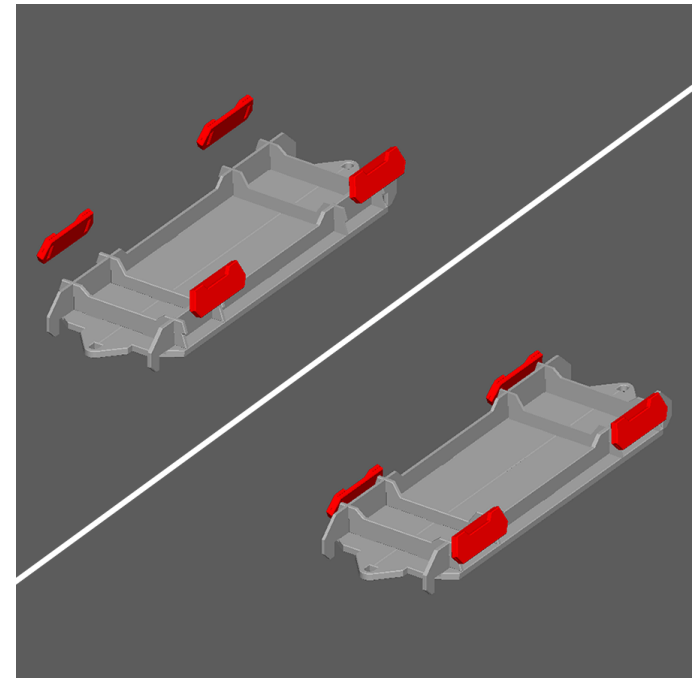
### STEP 10

1. Glue both d2 pieces to the **bed assembly** as shown.
2. Then glue both d4 and both d5 pieces to the **bed assembly** as shown to create the **rail car bed assembly**.



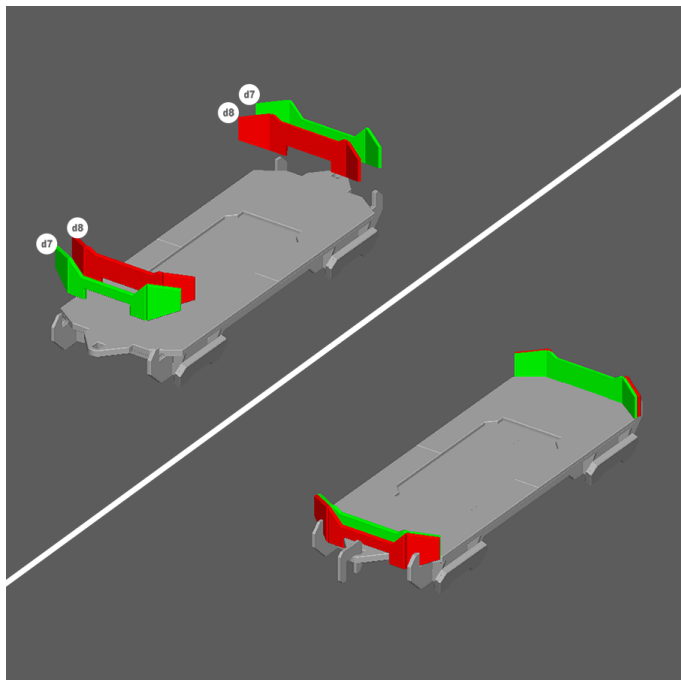
### STEP 11

1. Glue and clamp d6 as shown to create a **maglev assembly**.
2. Repeat 3 more times.



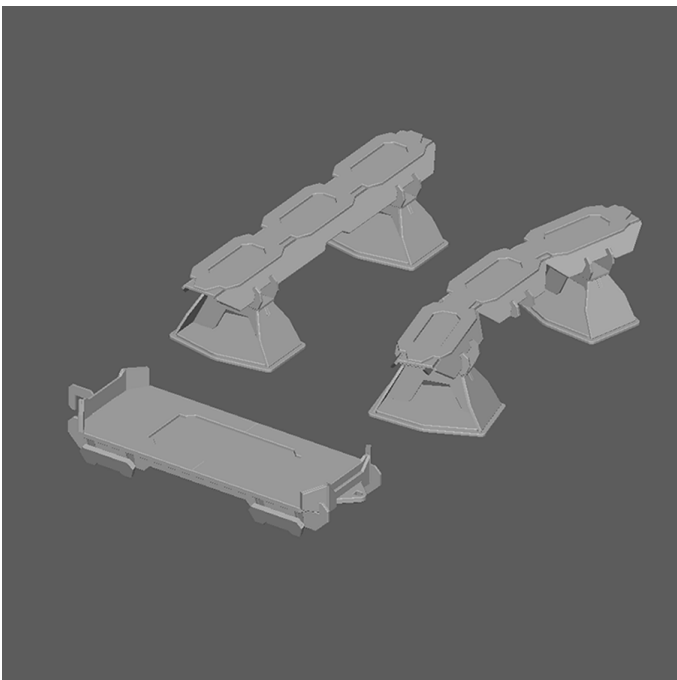
### STEP 12

1. Glue the four **maglev assemblies** to the **rail car bed assembly** as shown.



### STEP 13

1. Glue both pieces d7 to both pieces d8 and glue onto **rail car bed assembly** as shown to complete the **MagLev Rail Car**.
2. Repeat steps 9-13 for the other **MagLev Rail Car** in the set.



### YOU'VE FINISHED THE MAGLEV RAIL ADD-ON

Time to move on to [another set!](#)

