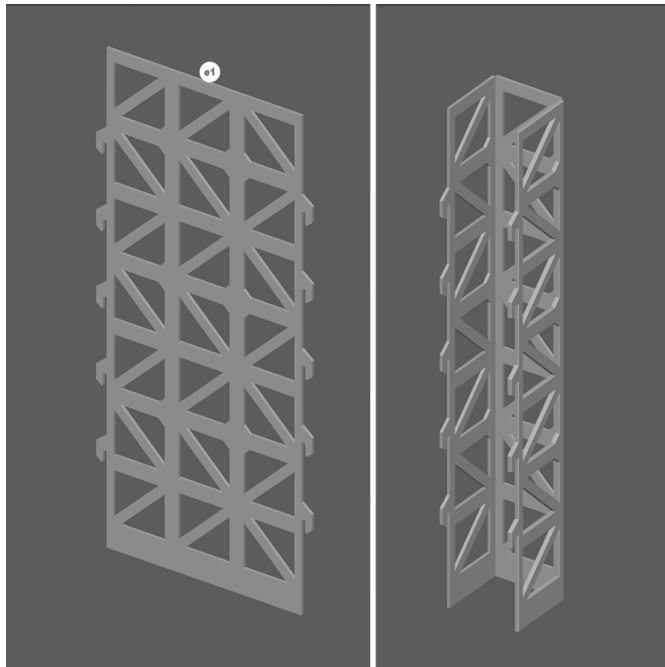


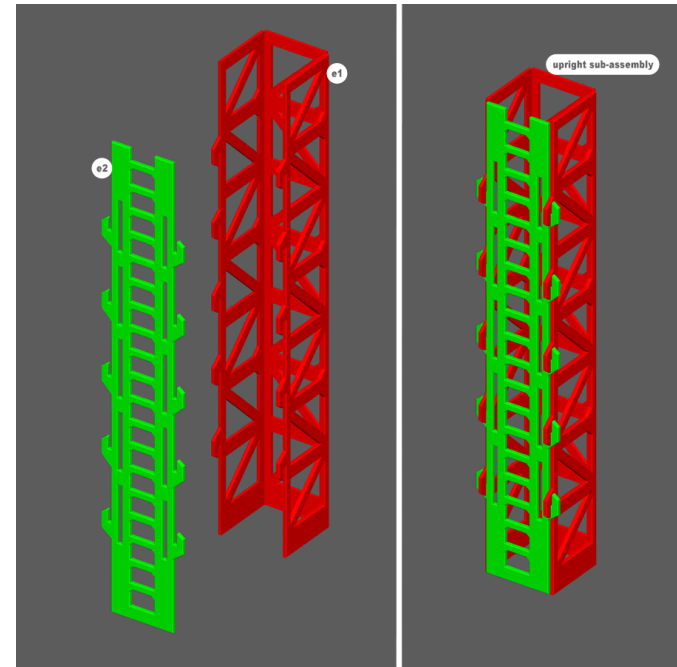


MAGLEV DEPOT V2 BUILD INSTRUCTIONS



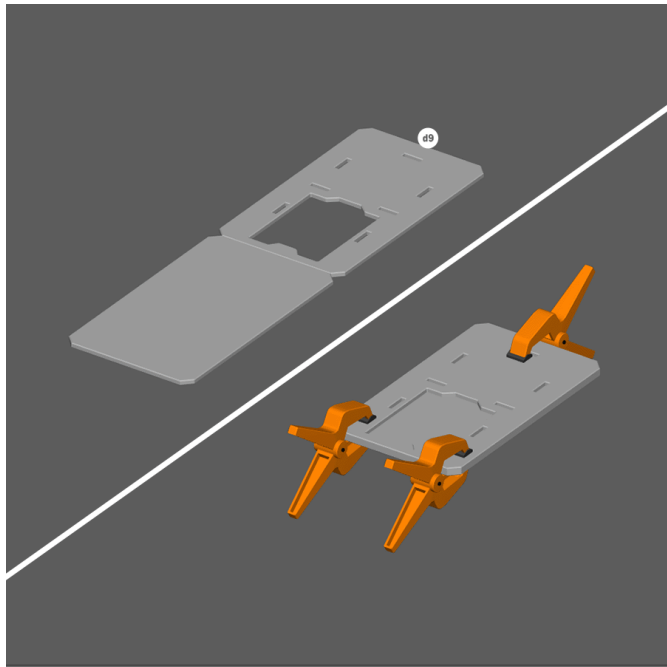
STEP 1

1. Fold as shown.



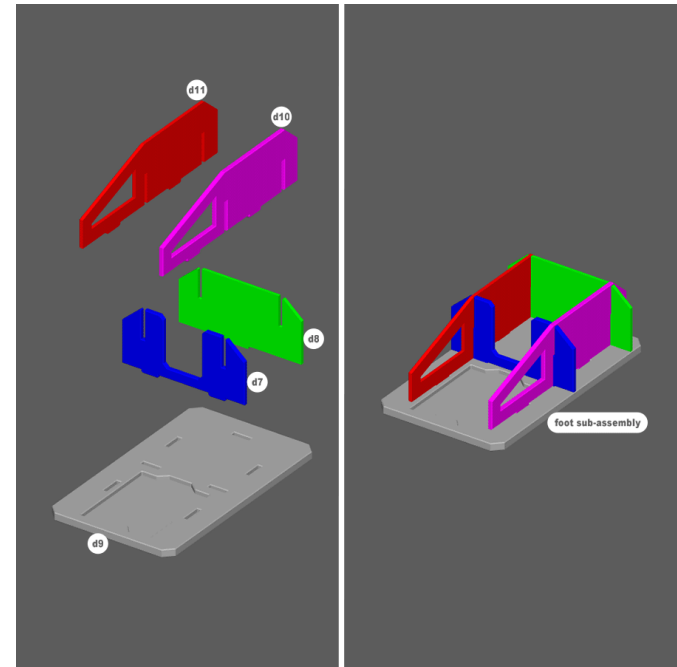
STEP 2

1. Glue piece e2 into piece e1, using glue in the notches where they fit together to create an **upright sub-assembly**.



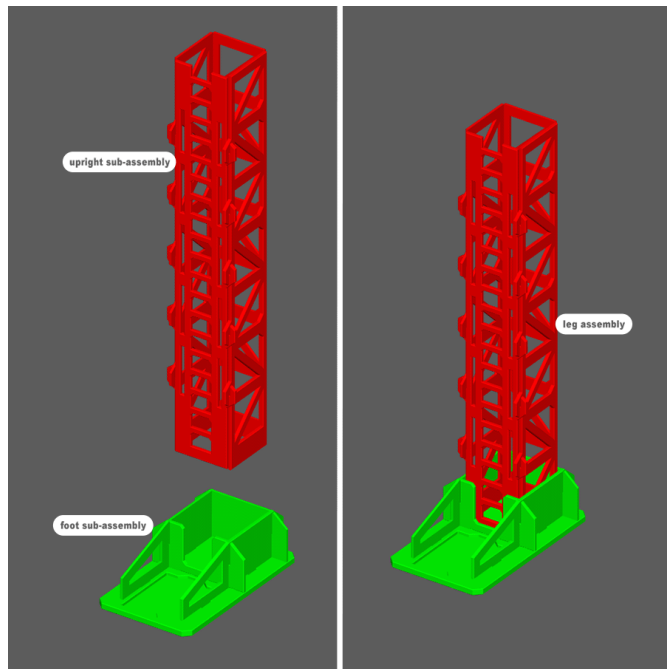
STEP 3

1. Fold, glue, and clamp as shown.



STEP 4

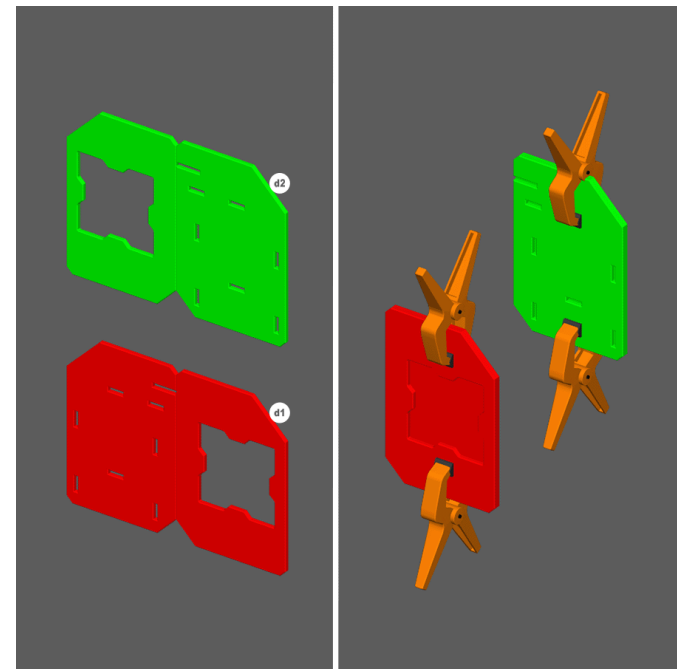
1. Glue d10 and d11 into the slots in d7 and d8.
2. Glue the assembly into the notches on d9 to create a **foot sub-assembly**.



STEP 5

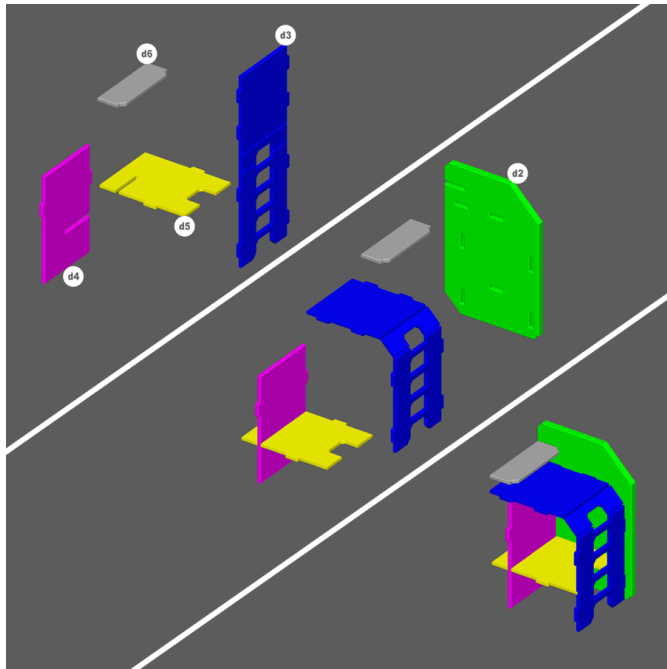
1. Glue **upright sub-assembly** into the **foot sub-assembly**.
2. This will create a completed **leg assembly**.
3. Repeat Steps 1-5 three more times.

Note: make sure the ladder section is facing the correct direction in relation to the foot as shown in picture.



STEP 6

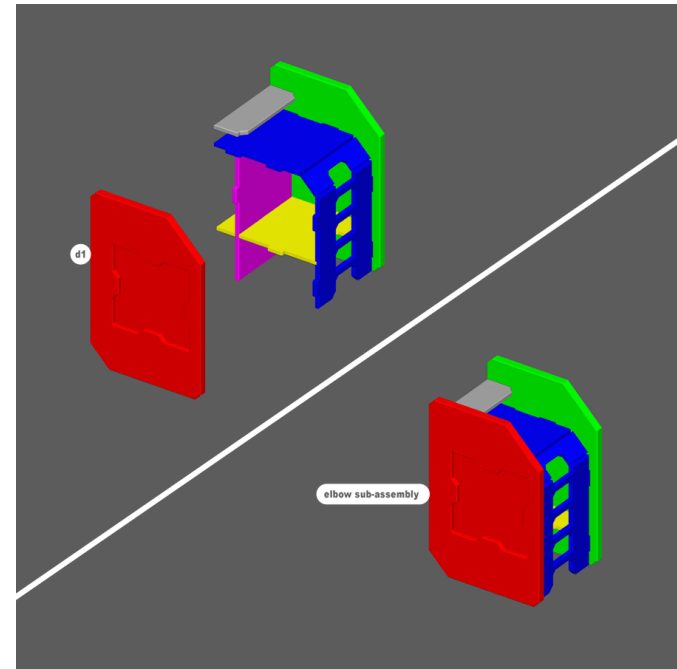
1. Fold, glue, and clamp as shown.



STEP 7

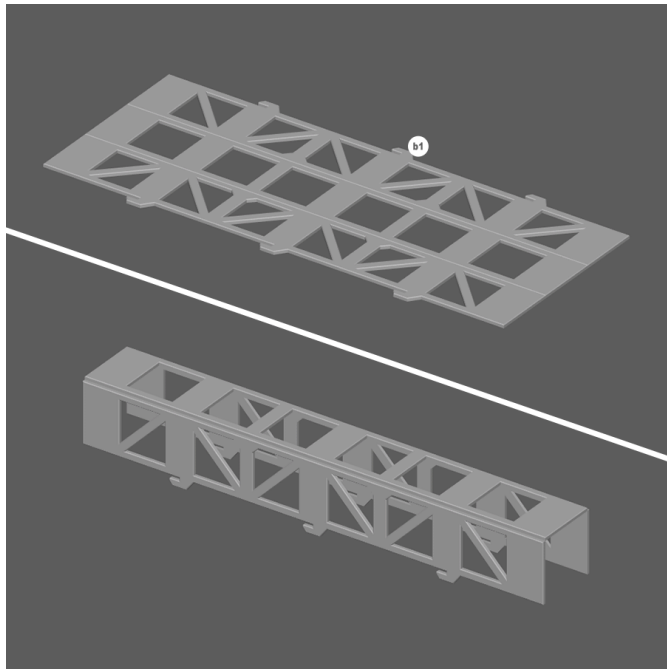
1. Slide pieces d4 and d5 together.
2. Fold piece d3 as shown.
3. Glue pieces d3, d4, d5, and d6 to piece d2 as shown.

NOTE: piece d6 will be loose until Step 8.



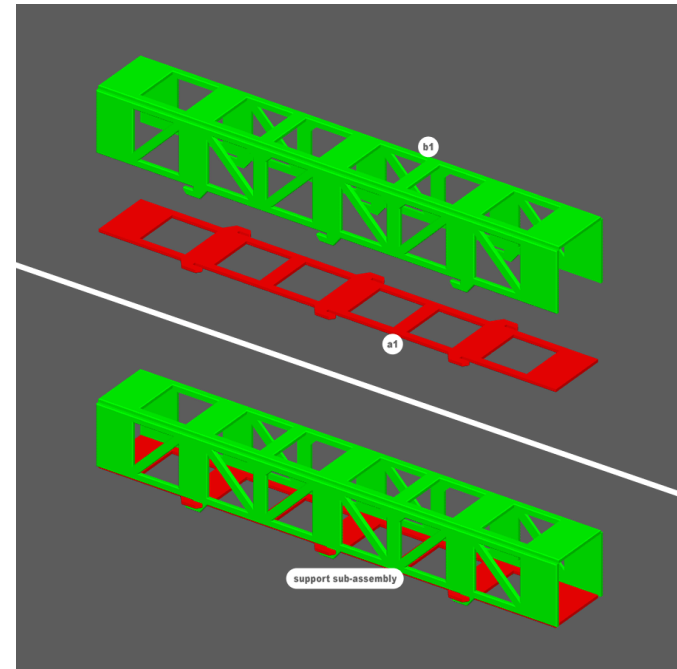
STEP 8

1. Glue piece d1 to existing pieces as shown.
2. This creates an **elbow sub-assembly**.
3. Repeat steps 7-8 three more times for a total of four **elbow sub-assemblies**.



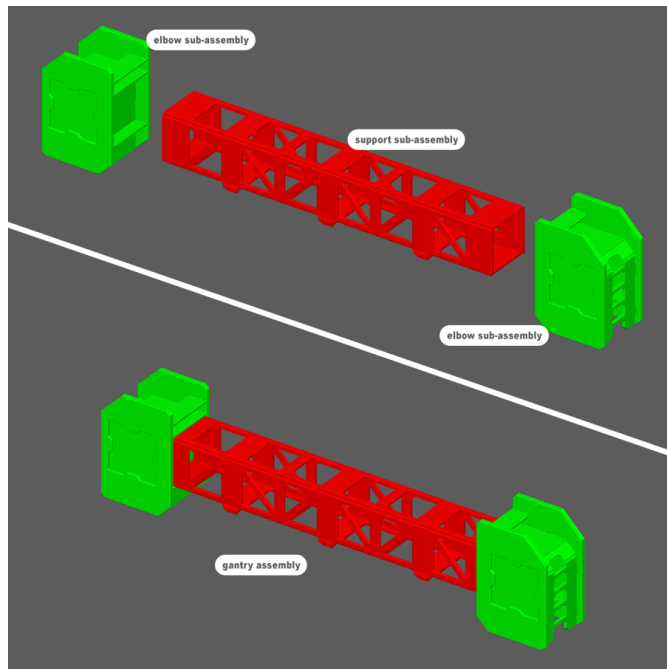
STEP 9

1. Fold as shown.



STEP 10

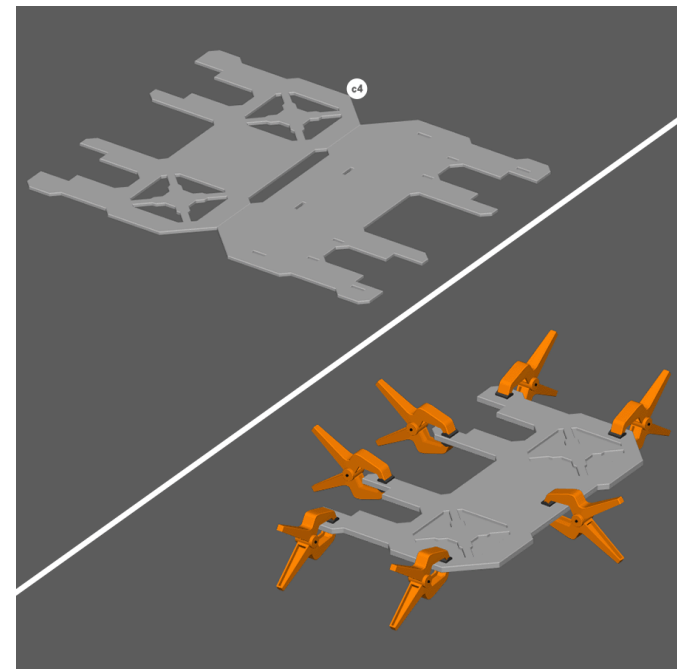
1. Glue piece b1 into piece a1, using glue in the notches where they fit together to creates a **support sub-assembly**.
2. Repeat steps 9-10 again so you have two **support sub-assemblies**.



STEP 11

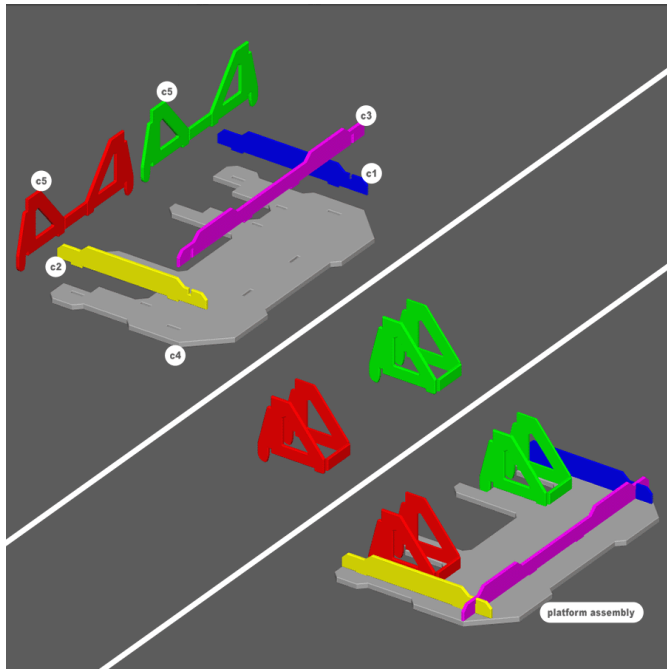
1. Glue an **elbow sub-assembly** to both ends of a **support sub-assembly** as shown.
2. Repeat one more time to create the gantry assembly.

NOTE: Make sure the support sub-assembly notched side is facing down as shown.



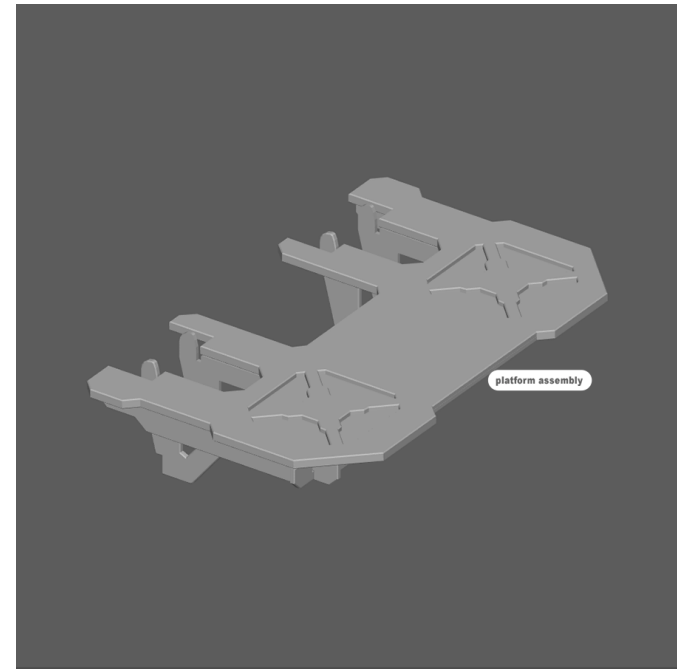
STEP 12

1. Fold, glue, and clamp as shown.



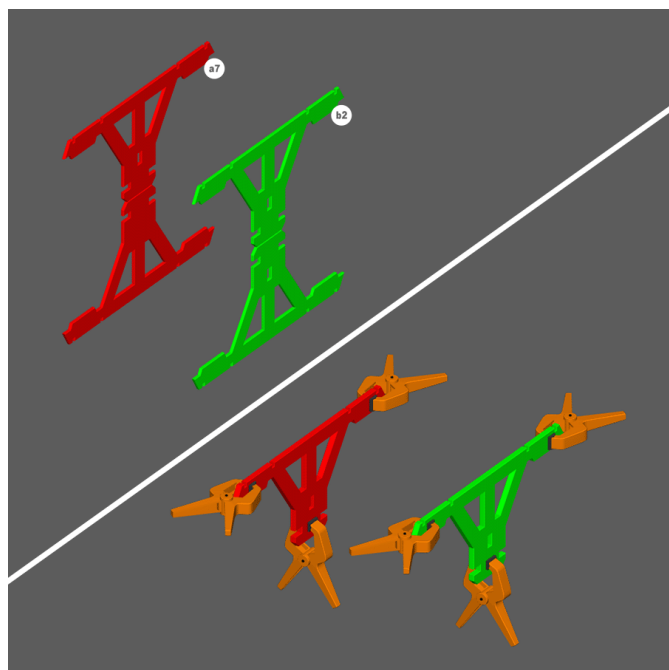
STEP 13

1. Glue pieces c1 and c2 to piece c4 as shown.
2. Slot and glue piece c3 into piece c1, c2, and c4 as shown.
3. Fold pieces c5 as shown and glue to piece c4 as shown to create a **platform assembly**.
4. Repeat one more time.



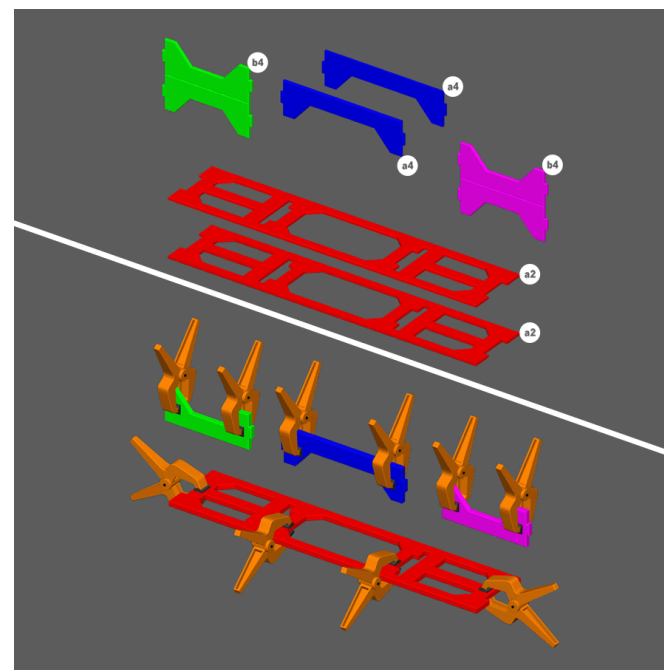
STEP 14

1. This is a top view of the completed **platform assembly**.



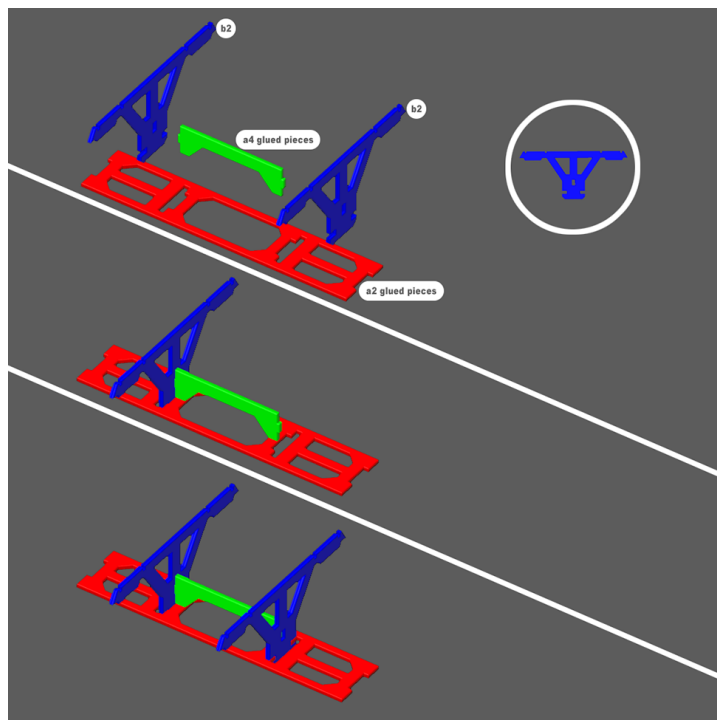
STEP 15

1. Fold, glue, and clamp as shown.
2. Repeat one more time.



STEP 16

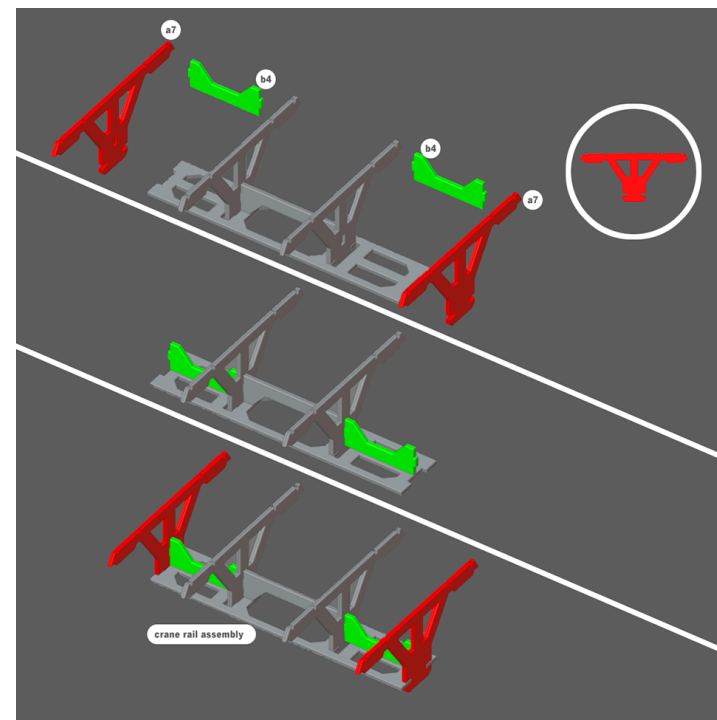
1. Fold, glue, and clamp pieces b4 as shown.
2. Clamp and glue pieces a2 and a4 as shown.



STEP 17

1. Glue and assemble one piece b2, and a4 glued pieces as shown.
2. Then glue and assemble other piece b2 as shown.

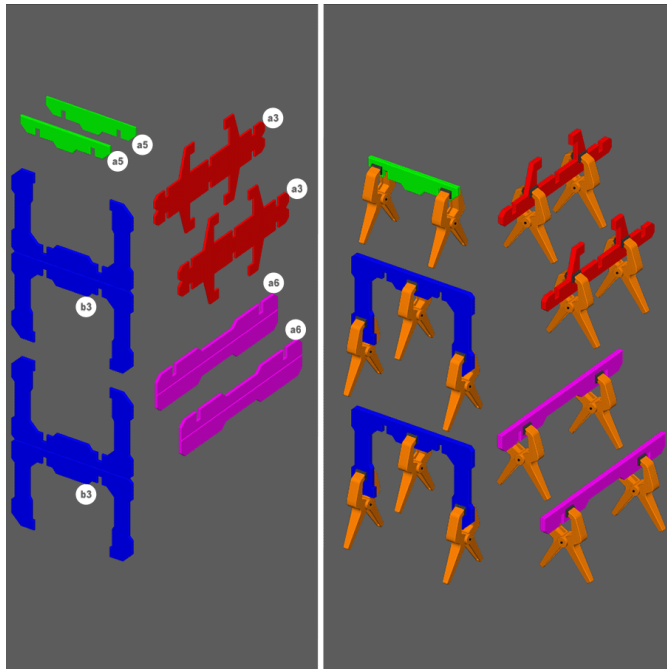
Note: Make sure you're using piece b2 that has a small hole all the way through when built (as shown in the inset). You can compare against step 18's inset.



STEP 18

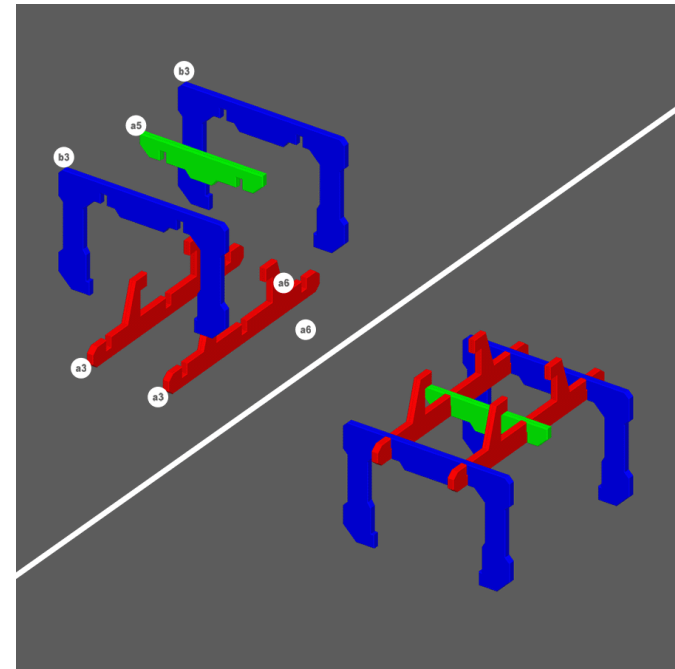
1. Glue and assemble pieces b4 as shown.
2. Then glue and assemble pieces b7 as shown to complete the **crane rail assembly**.

Note: Make sure you're using piece a7 that does not have a small hole all the way through as shown in the inset. Compare against step 17's inset.



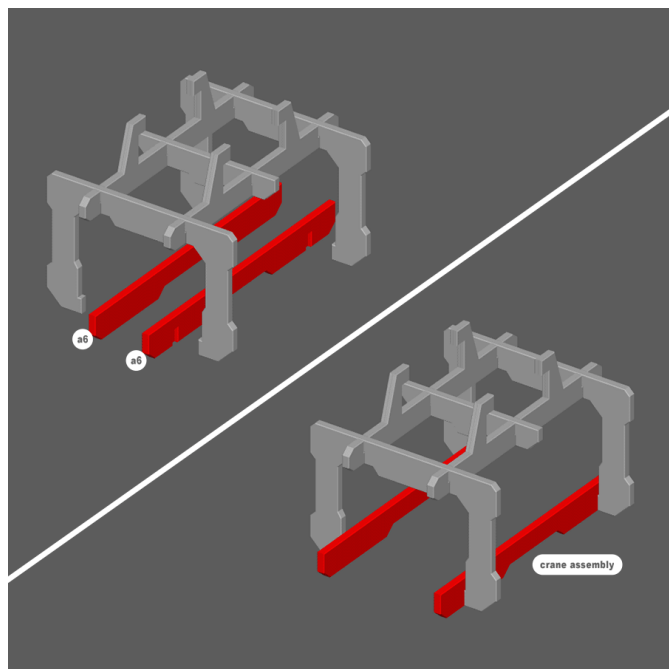
STEP 19

1. Glue and clamp pieces a5 as shown.
2. Fold, glue, and clamp other pieces as shown.



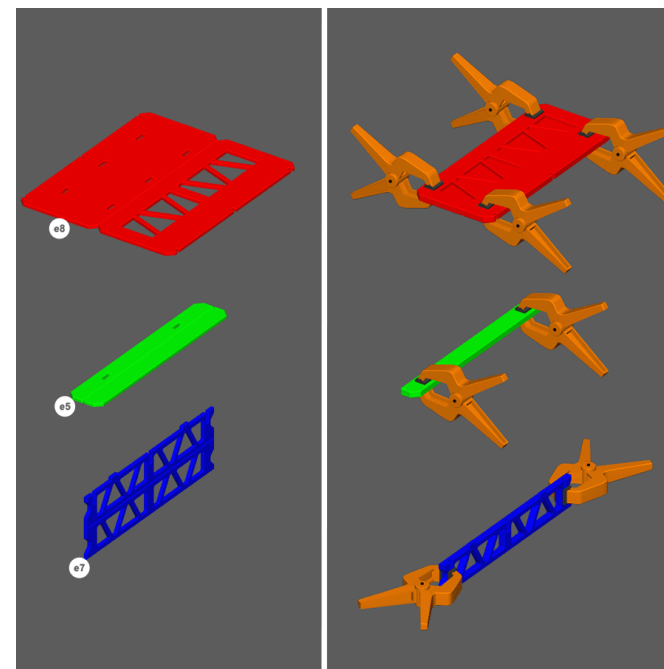
STEP 20

1. Glue and assemble as shown.



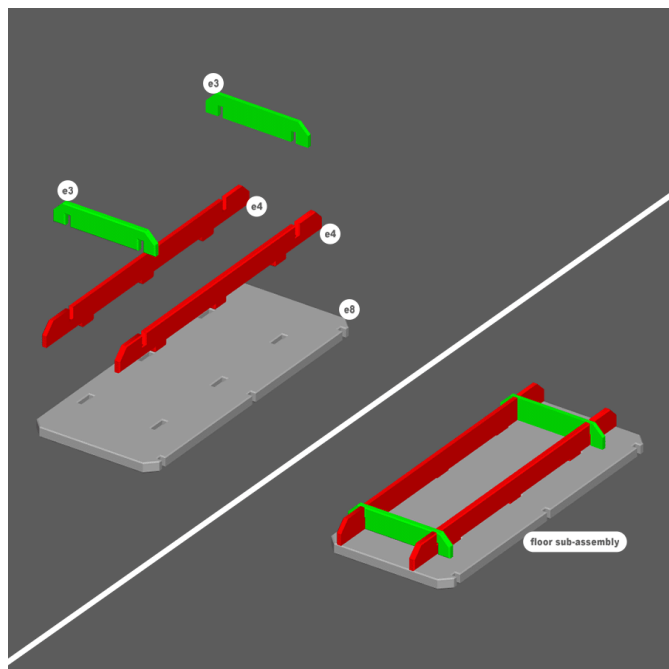
STEP 21

1. Glue and assemble pieces as shown.
2. This creates the completed **crane assembly**.



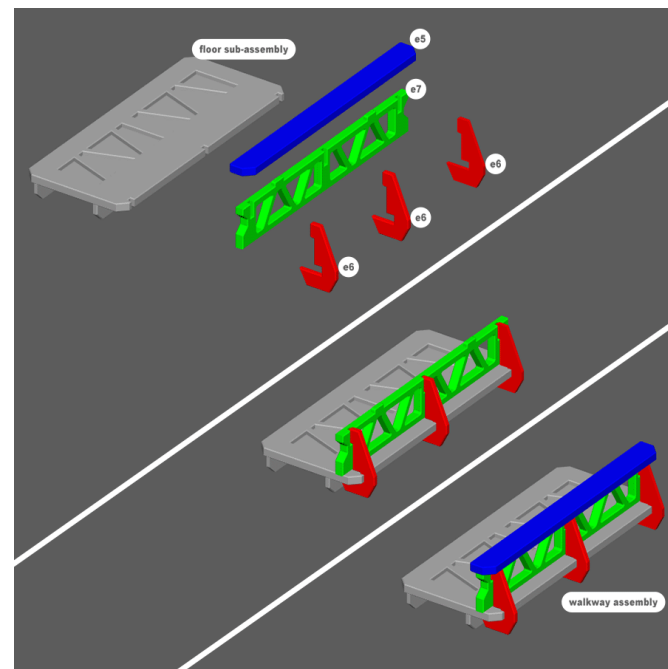
STEP 22

1. Fold, glue, and clamp pieces as shown.



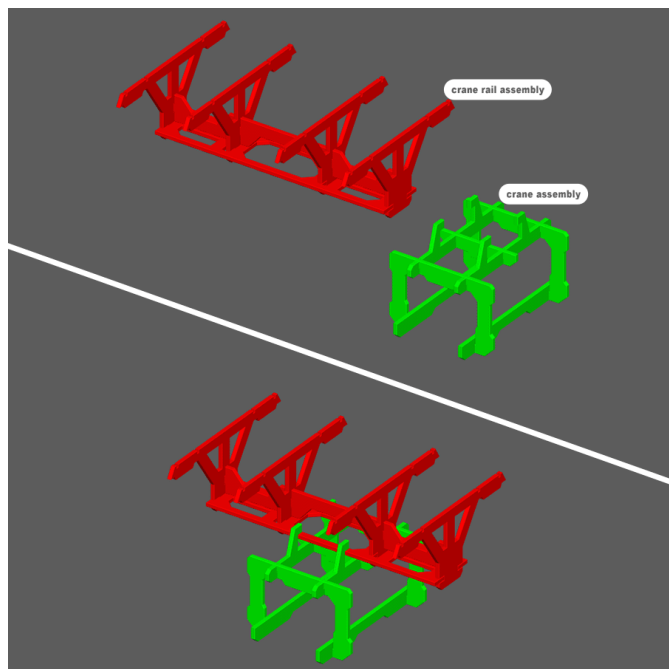
STEP 23

1. Glue pieces e4 to piece e8 as shown.
2. Glue pieces e3 to piece e8 as shown.
3. This creates a **floor sub-assembly**.



STEP 24

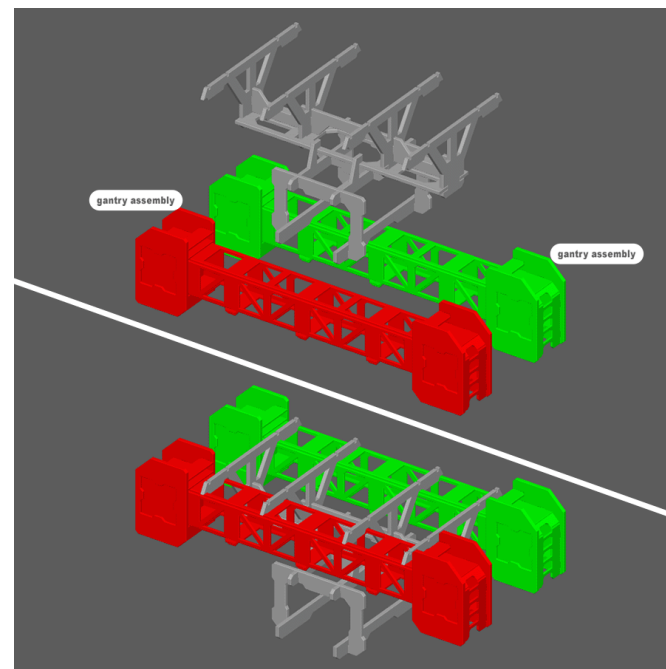
1. Glue pieces e6 and e7 to floor sub-assembly as shown.
2. Glue piece e5 to assembly as shown.
3. This creates a completed **walkway assembly**.
4. Repeat Steps 22-24 three more times to create all four walkways.



STEP 25

1. Assemble as shown, attaching the crane to the rail.

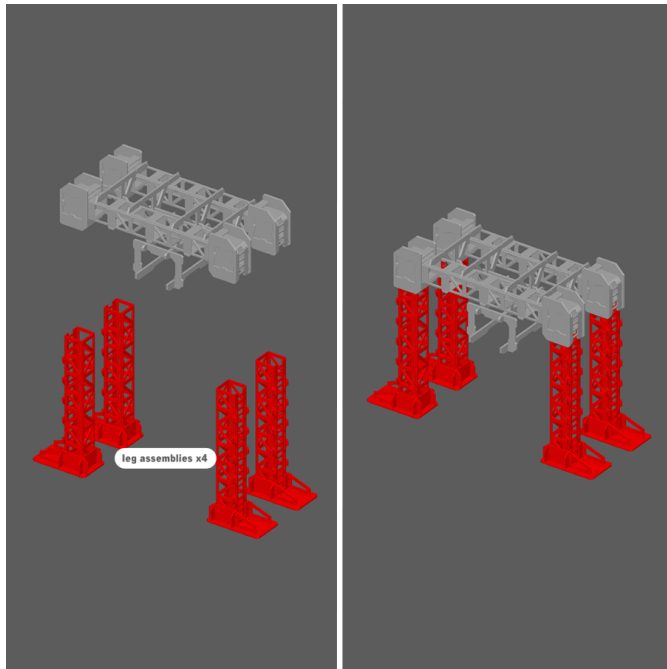
Note: Do not glue these assemblies together. These parts are intended to move.



STEP 26

1. Assemble as shown, glueing the crane rail assembly to the gantries.

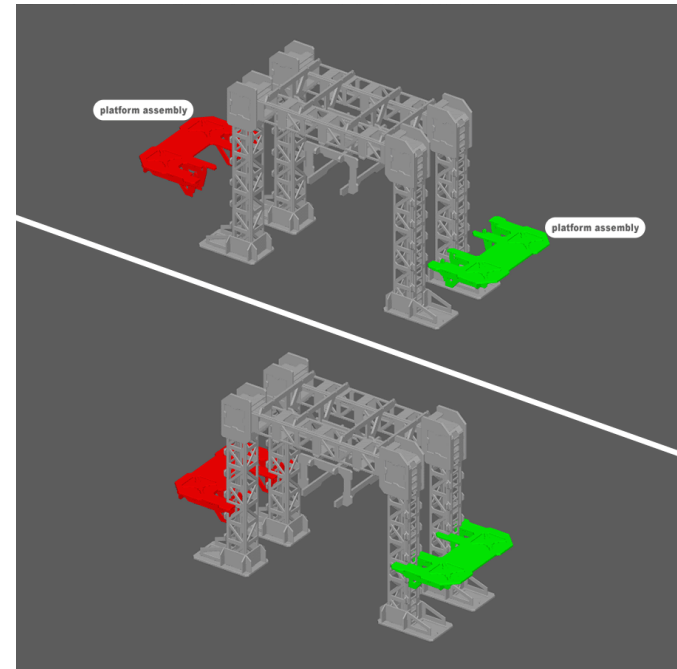
Note: The crane assembly is intended to slide back and forth so make sure not to glue it when glueing the other parts.



STEP 27

1. Assemble as shown, attaching the legs to the gantry.

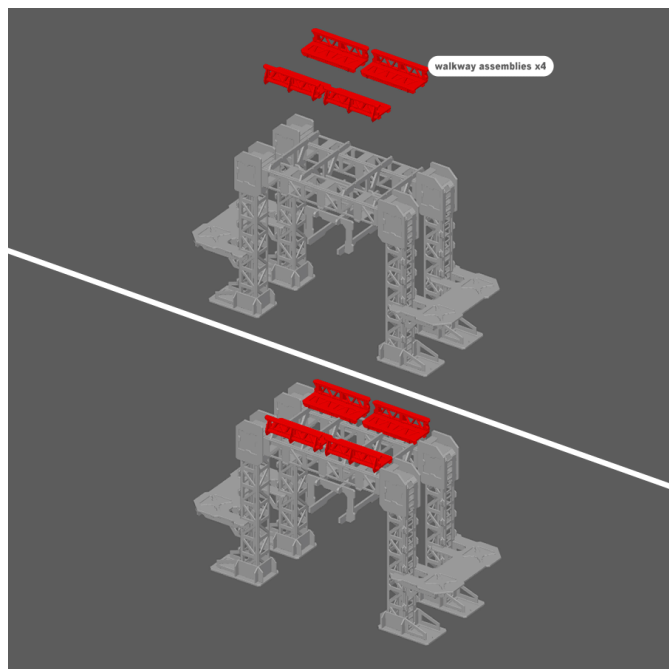
Note: Do not glue these assemblies together. These parts are intended to be removed for storage.



STEP 28

1. Assemble as shown, attaching the platforms to the legs.

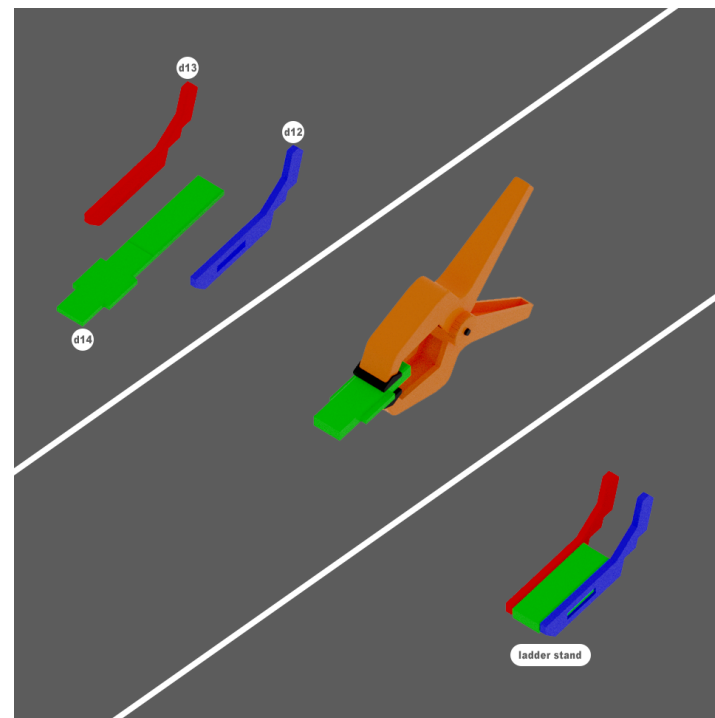
Note: Do not glue these assemblies together. These parts are intended to adjust up and down on the legs for alternate platform heights. (e.g. Platforms can be adjusted to match height of [StarComm Installation](#) deck height.)



STEP 29

1. Assemble as shown, attaching the walkways to the gantry with the rails facing out.

Note: Do not glue these assemblies together. These parts are intended to be removed for storage.

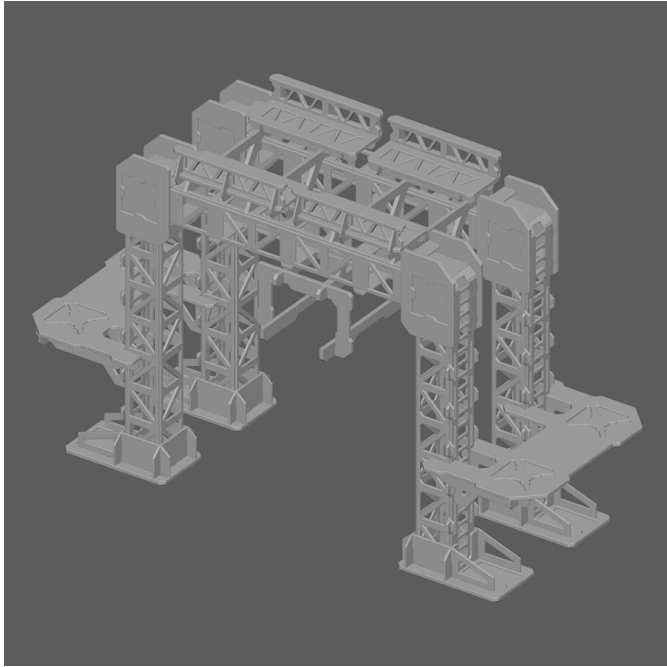


STEP 30

1. Fold, glue, and clamp piece d14 as shown.

2. Glue and attach pieces d12 and d13 to create a **ladder stand**.

Note: These are for miniatures to stand on. They have notches to adjust for ladder pitch and can be moved throughout play to give your game a more accurate line of sight when using ladders.



YOU'VE FINISHED THE MAGLEV DEPOT V2

Time to move on to [another set!](#)

