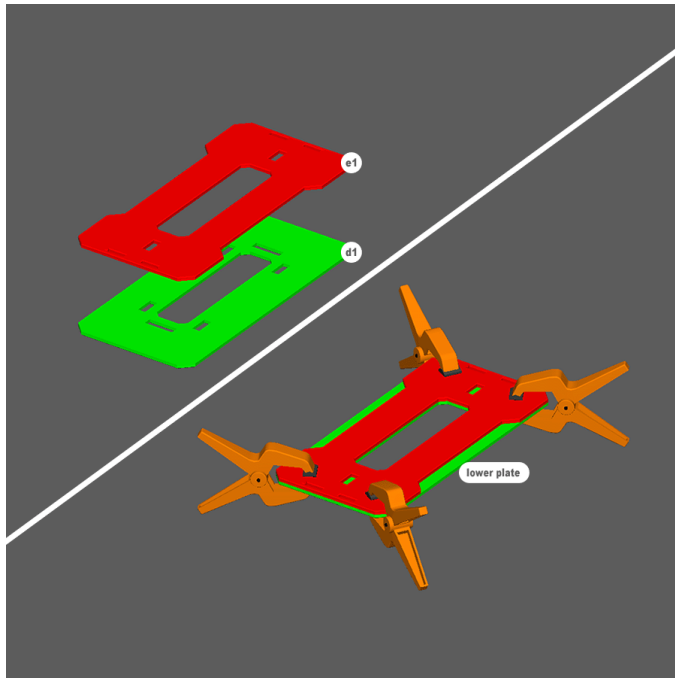


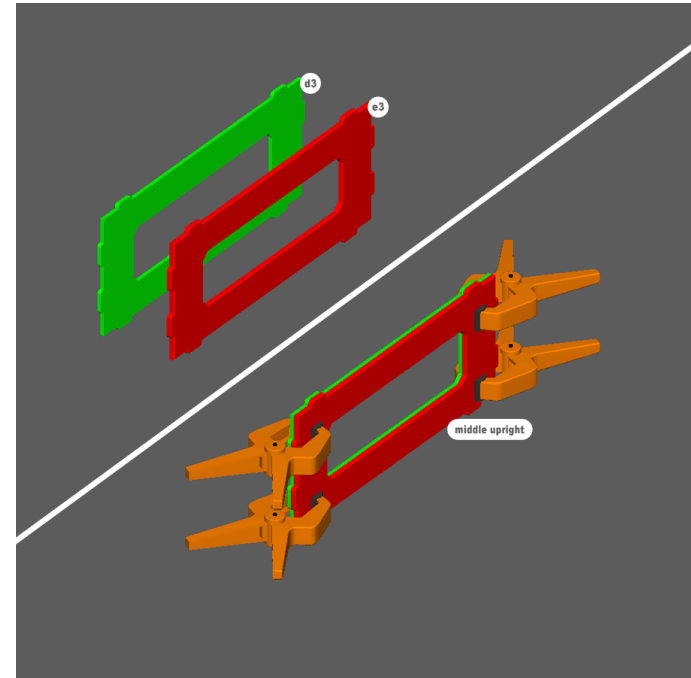


CRATE CONTAINERS BUILD INSTRUCTIONS



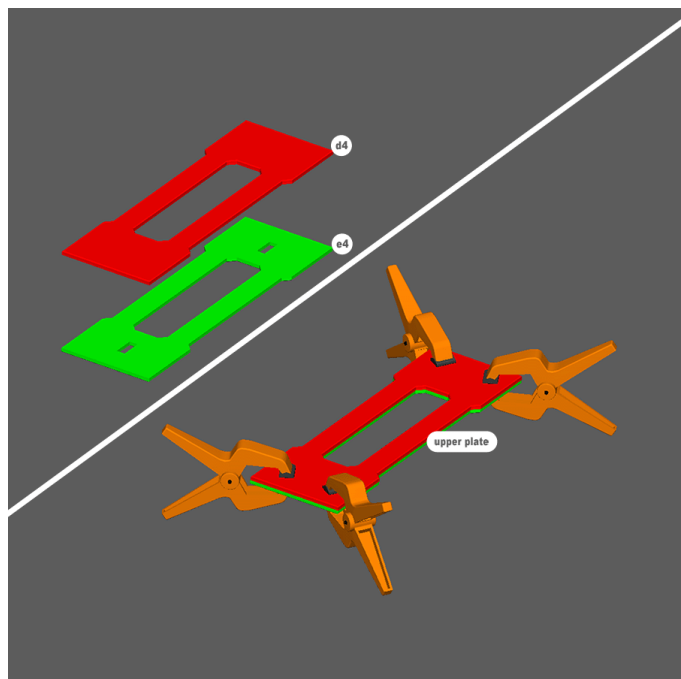
STEP 1

1. Glue and clamp as shown to create the lower plate.



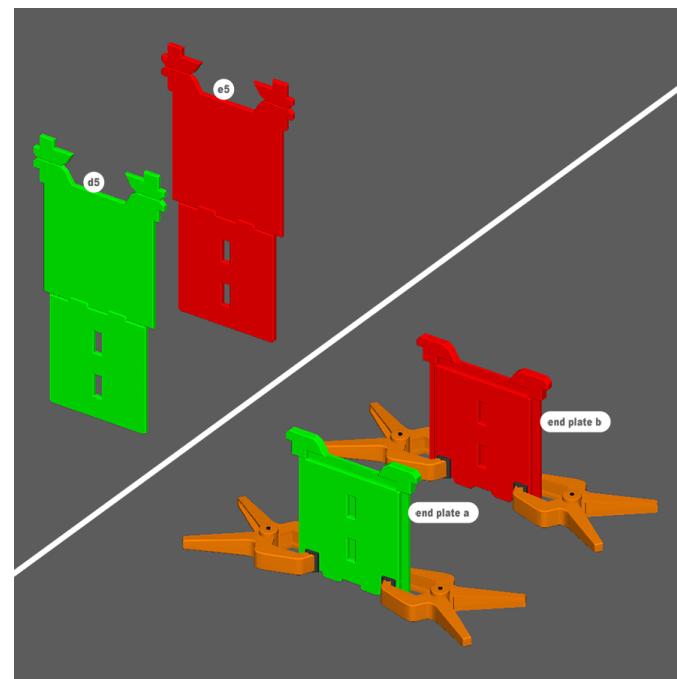
STEP 2

1. Glue and clamp other pieces as shown to create the middle upright piece.



STEP 3

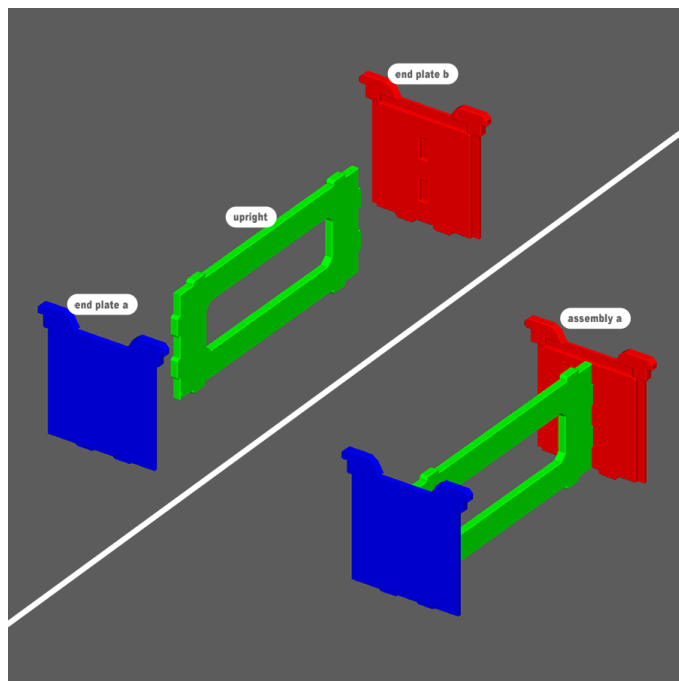
1. Glue and clamp pieces as shown to create the upper plate.



STEP 4

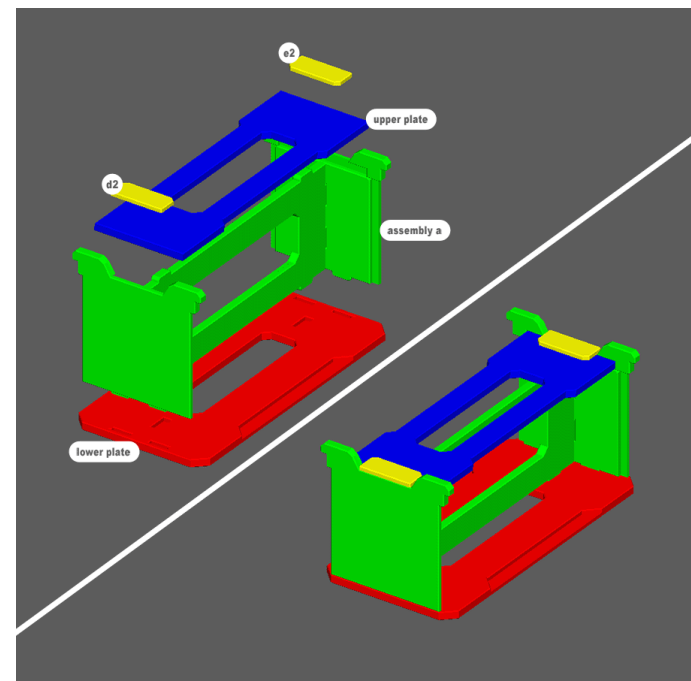
1. Fold, glue, and clamp as shown to create the end plates.

Note: the little "Ark of the Covenant" pieces on the top can be fiddly. Use care, and if your name is Marion [don't look!](#)



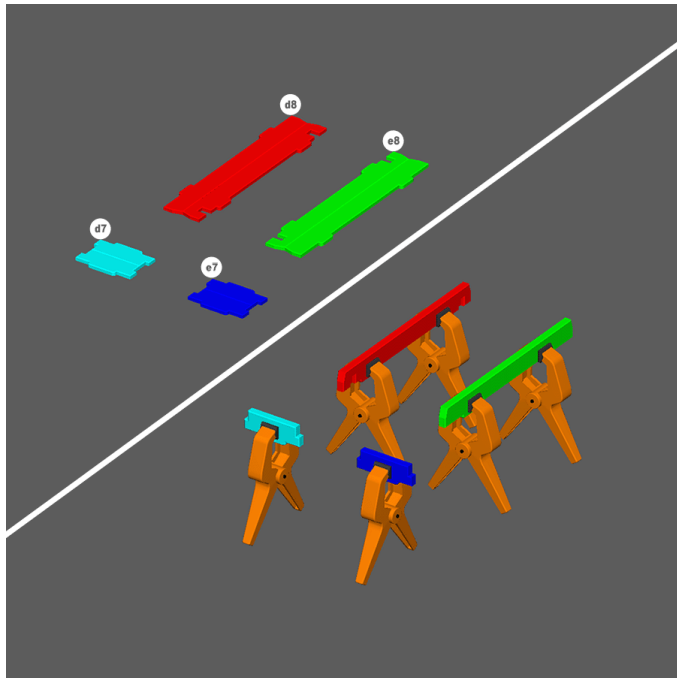
STEP 5

1. Put glue in slots on end plate a and end plate b, then affix to upright.



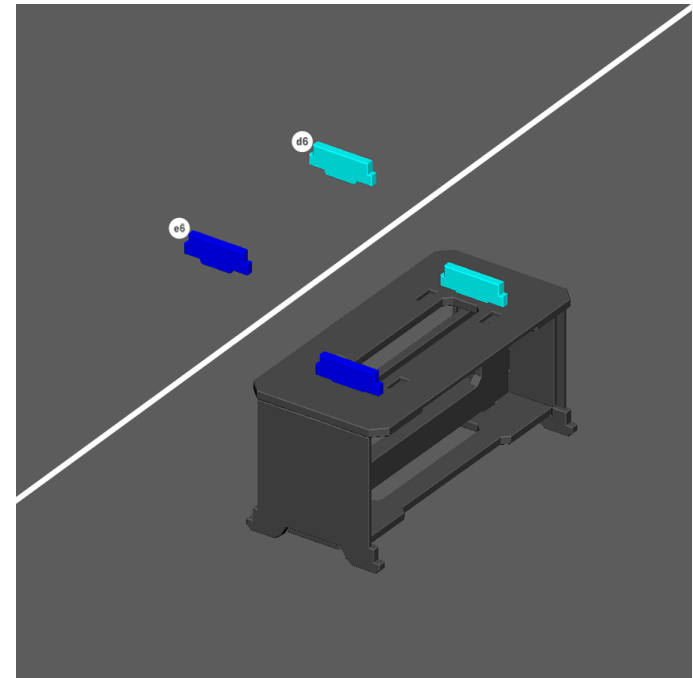
STEP 6

1. Put glue in slots in lower plate and upper plate, then affix assembly a.
2. Glue pieces d2 and e2 as shown.



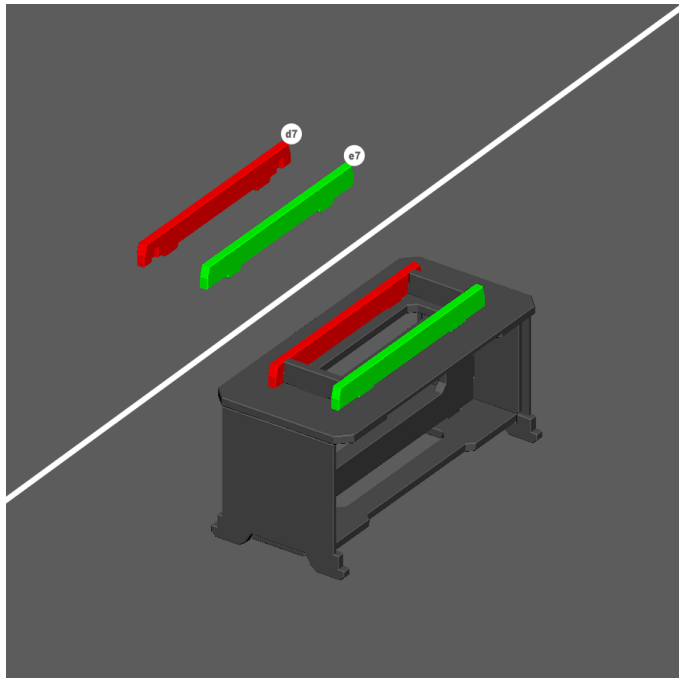
STEP 7

1. Fold, glue, and clamp as shown to create the bottom container rails.



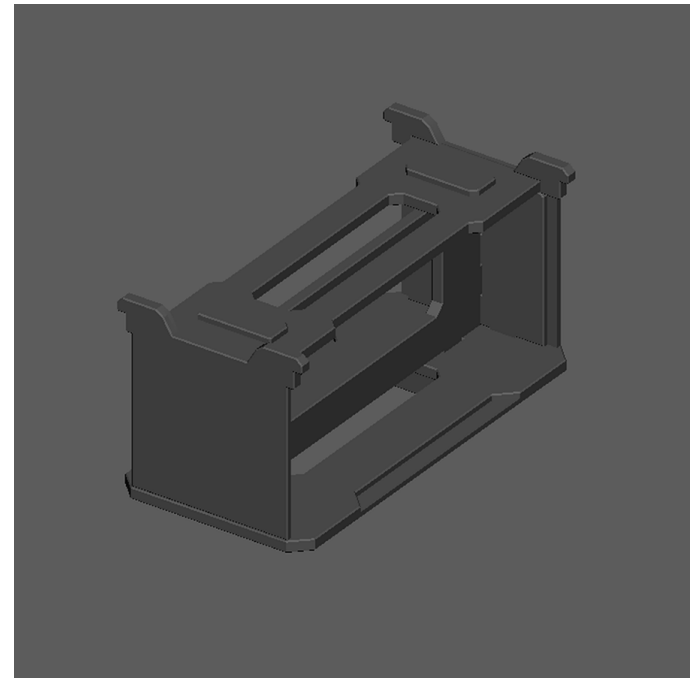
STEP 8

1. Glue the short rail pieces first, onto the bottom of the container assembly.



STEP 9

1. Glue the longer rails as shown.



YOU'VE FINISHED A CRATE CONTAINER

Time to move on to [another set!](#)

