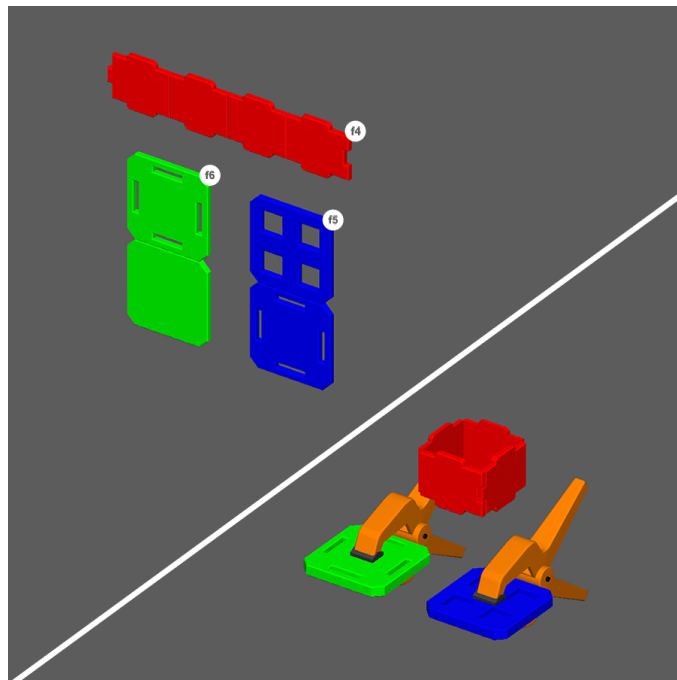




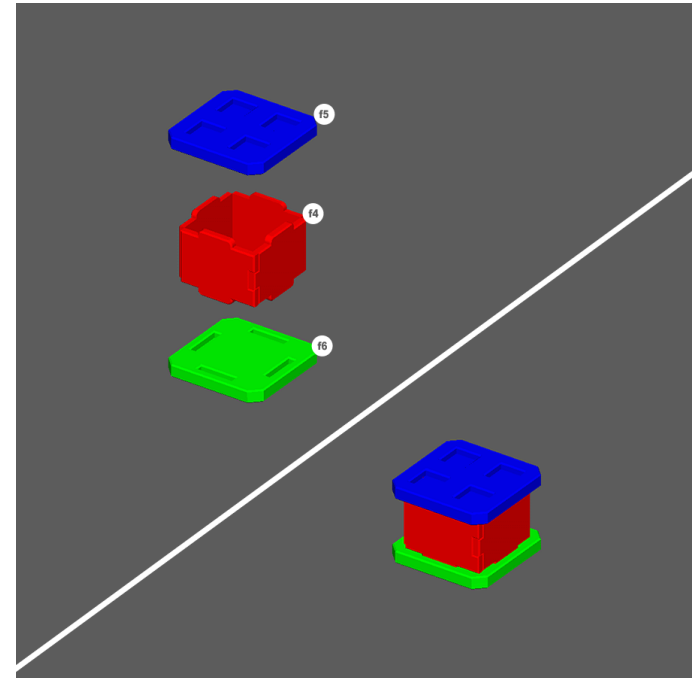
CARGO CRATES BUILD INSTRUCTIONS



STEP 1 – SMALL CRATE

1. Fold, glue, and clamp parts f5 and f6 as shown.

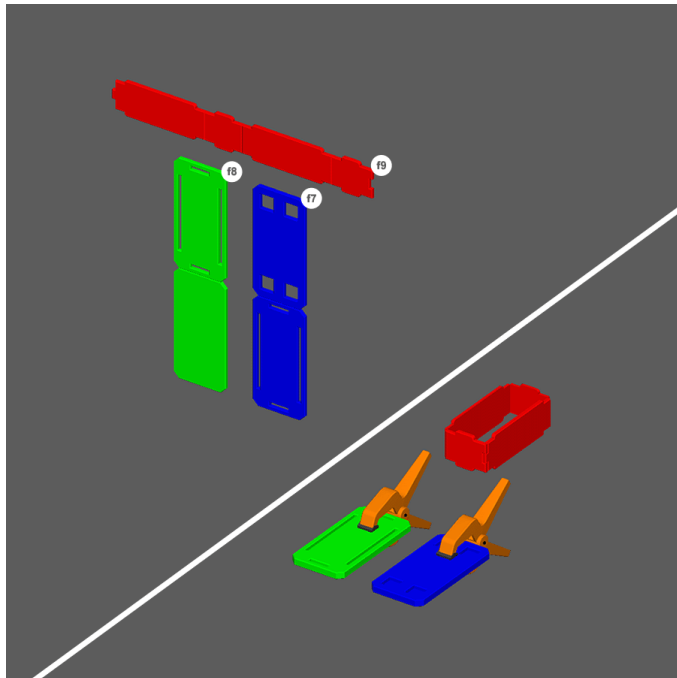
2. Fold and glue piece f4 to create a box.



STEP 2

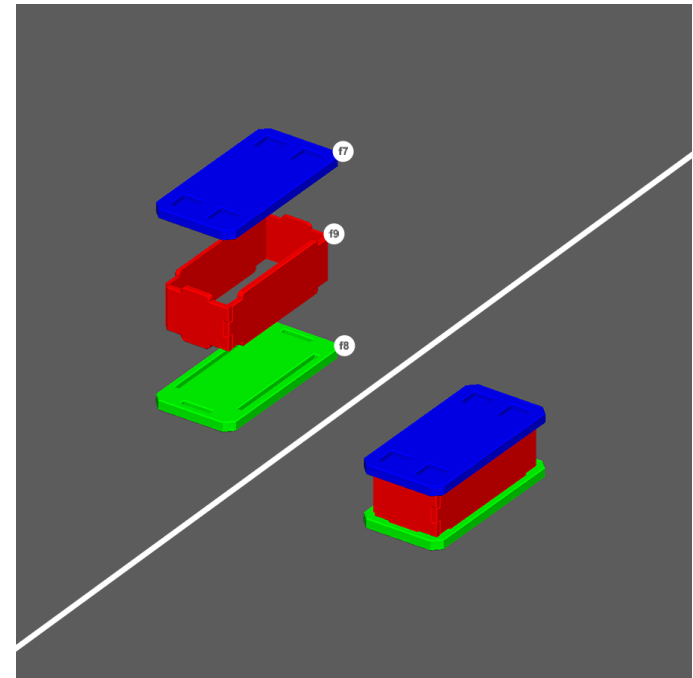
1. Apply glue to the slots in pieces f5 and f6.
2. Make a little crate sandwich. [It's done!](#)

NOTE – Piece f4 has a marking on the inside that shows which direction is up.



STEP 3 – MEDIUM CRATE

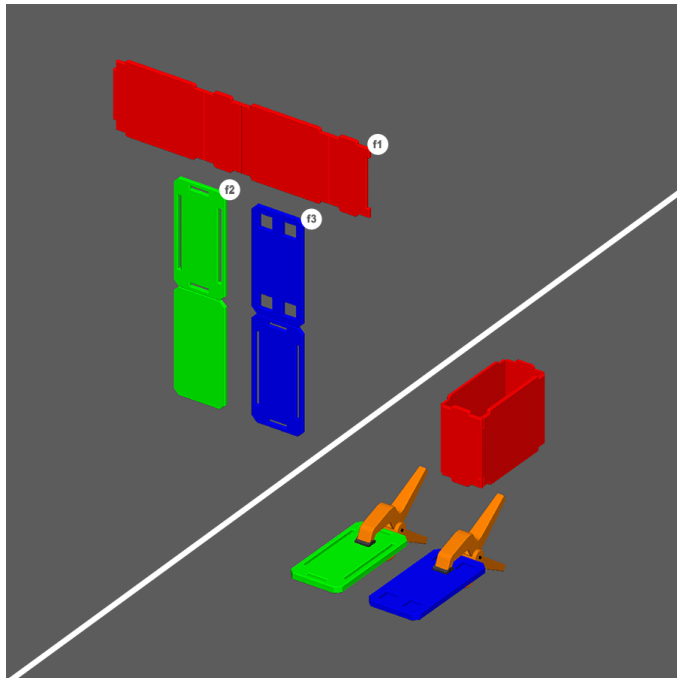
1. Fold, glue, and clamp parts f7 and f8 as shown.
2. Fold and glue piece f9 to create a box.



STEP 4

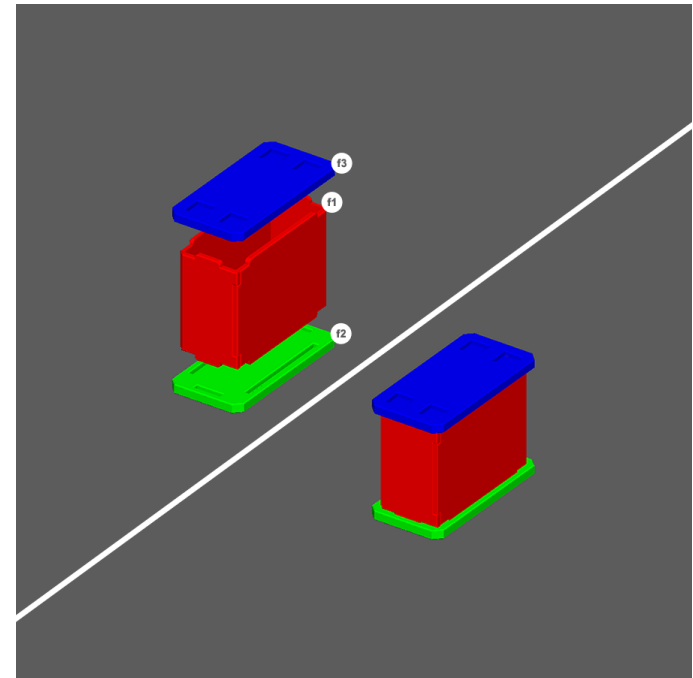
1. Apply glue to the slots in pieces f7 and f8.
2. Make a little crate sandwich. [It's done!](#)

NOTE – Piece f9 has a marking on the inside that shows which direction is up.



STEP 5 – LARGE CRATE

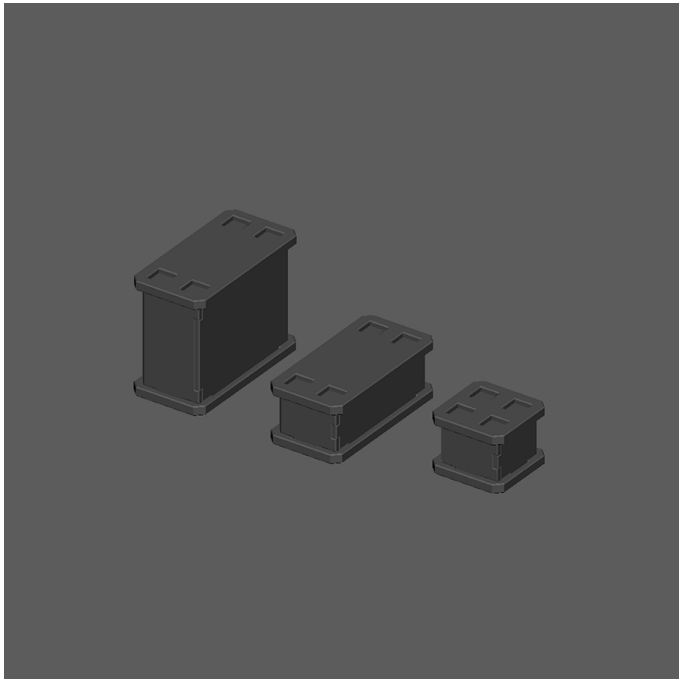
1. Fold, glue, and clamp parts f2 and f3 as shown.
2. Fold and glue piece f1 to create a box.



STEP 6

1. Apply glue to the slots in pieces f2 and f3.
2. Make a little crate sandwich. [It's done!](#)

NOTE – Piece f4 has a marking on the inside that shows which direction is up.



YOU'VE FINISHED A CARGO CRATES

Time to move on to [another set!](#)

