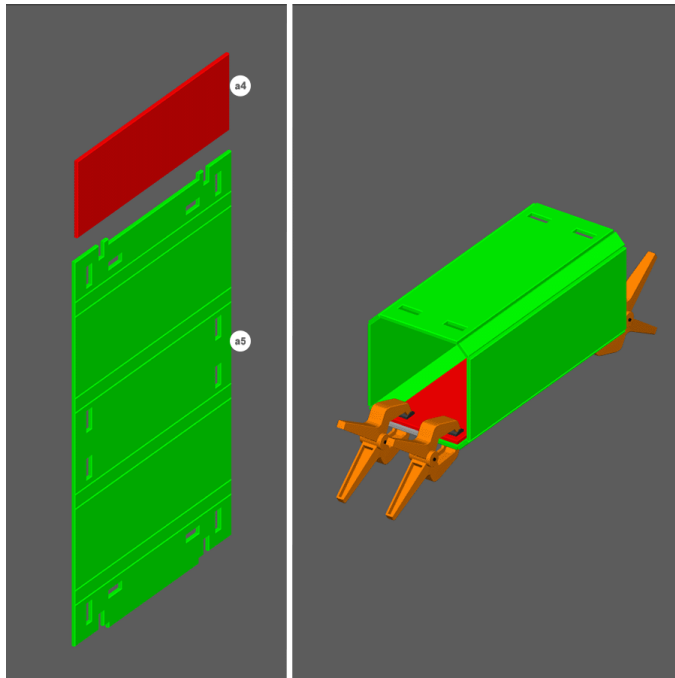


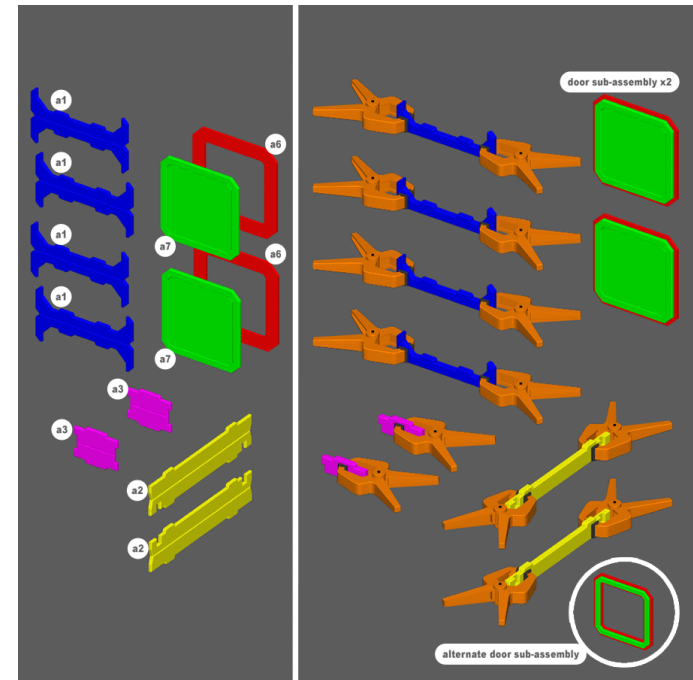


CARGO CONTAINERS BUILD INSTRUCTIONS



STEP 1

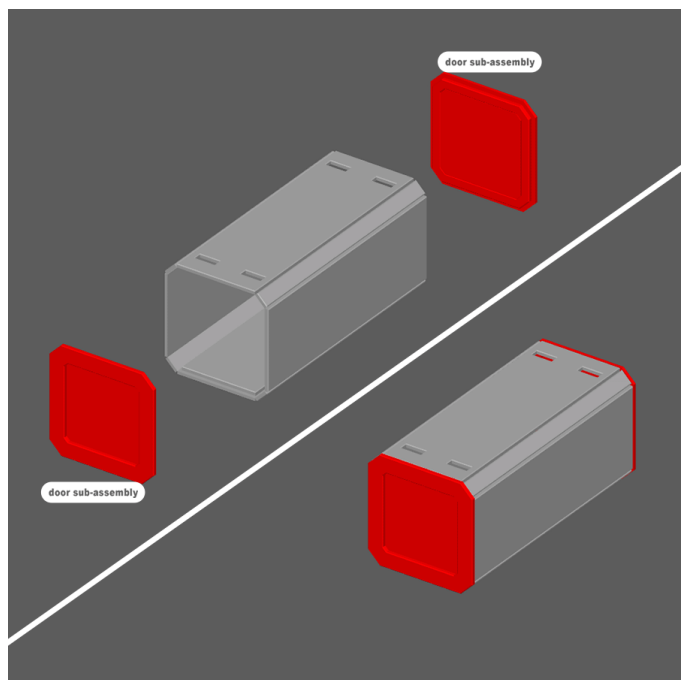
1. Fold, glue, and clamp as shown.



STEP 2

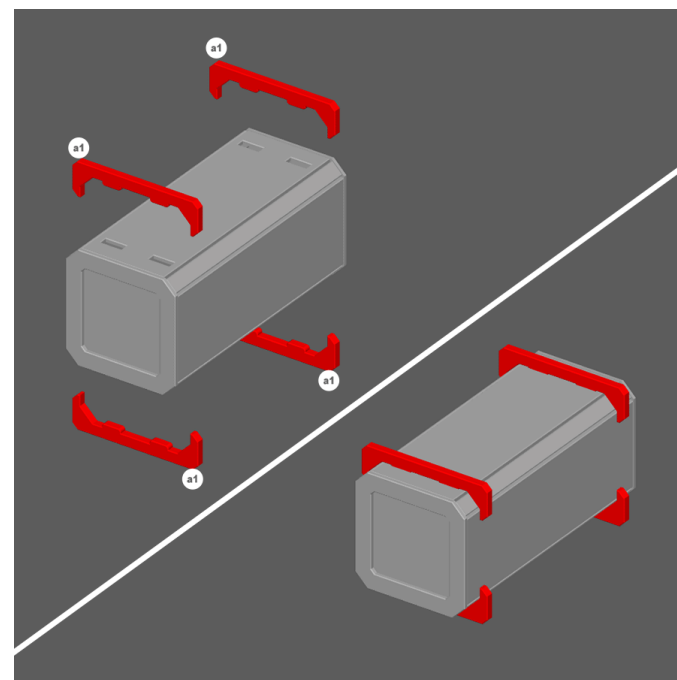
1. Glue pieces a7 and a6 together as shown to make two door sub-assemblies.
2. Fold, glue, and clamp other pieces as shown.

NOTE - You can pop out the center of a7 to leave the cargo container ends open.



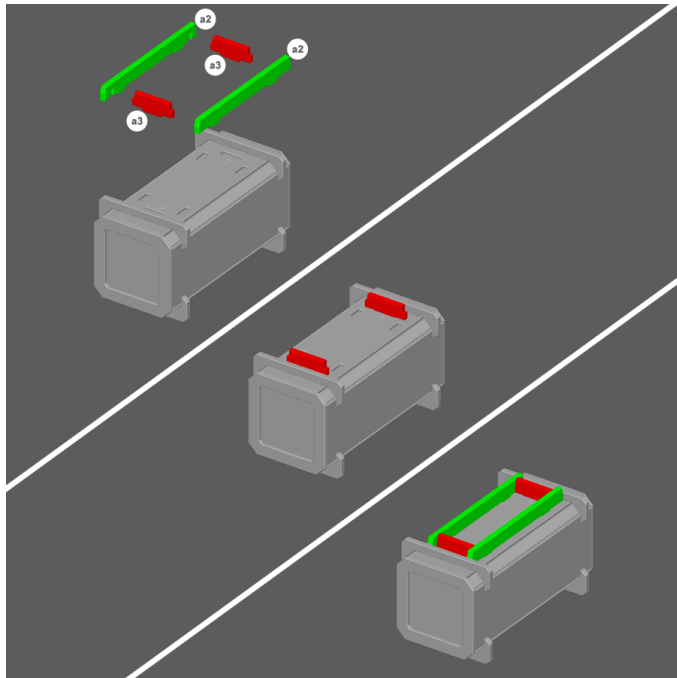
STEP 3

1. Glue door sub-assemblies to the body as shown.



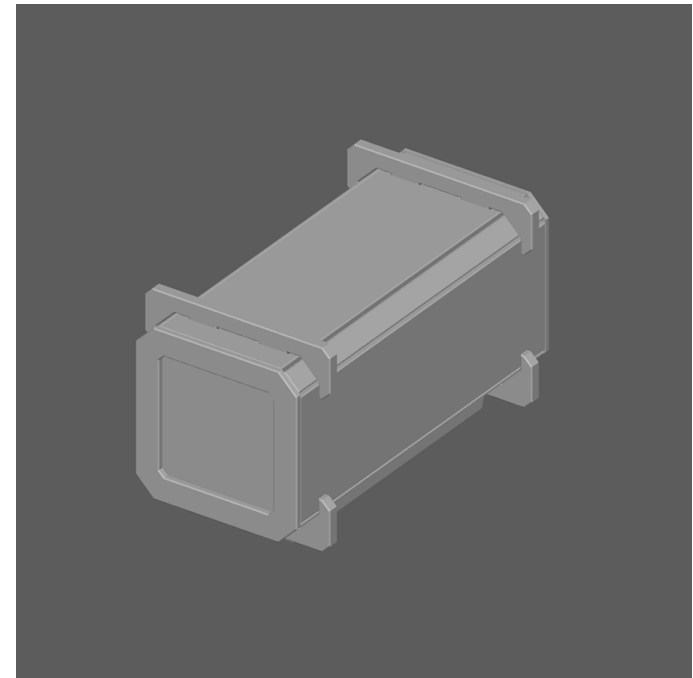
STEP 4

1. Glue pieces a1 to the body as shown.



STEP 5

1. Glue pieces a3 to the body as shown.
2. Then glue pieces a2 to the body as shown.



YOU'VE FINISHED A CARGO CONTAINER

Time to move on to [another set!](#)

